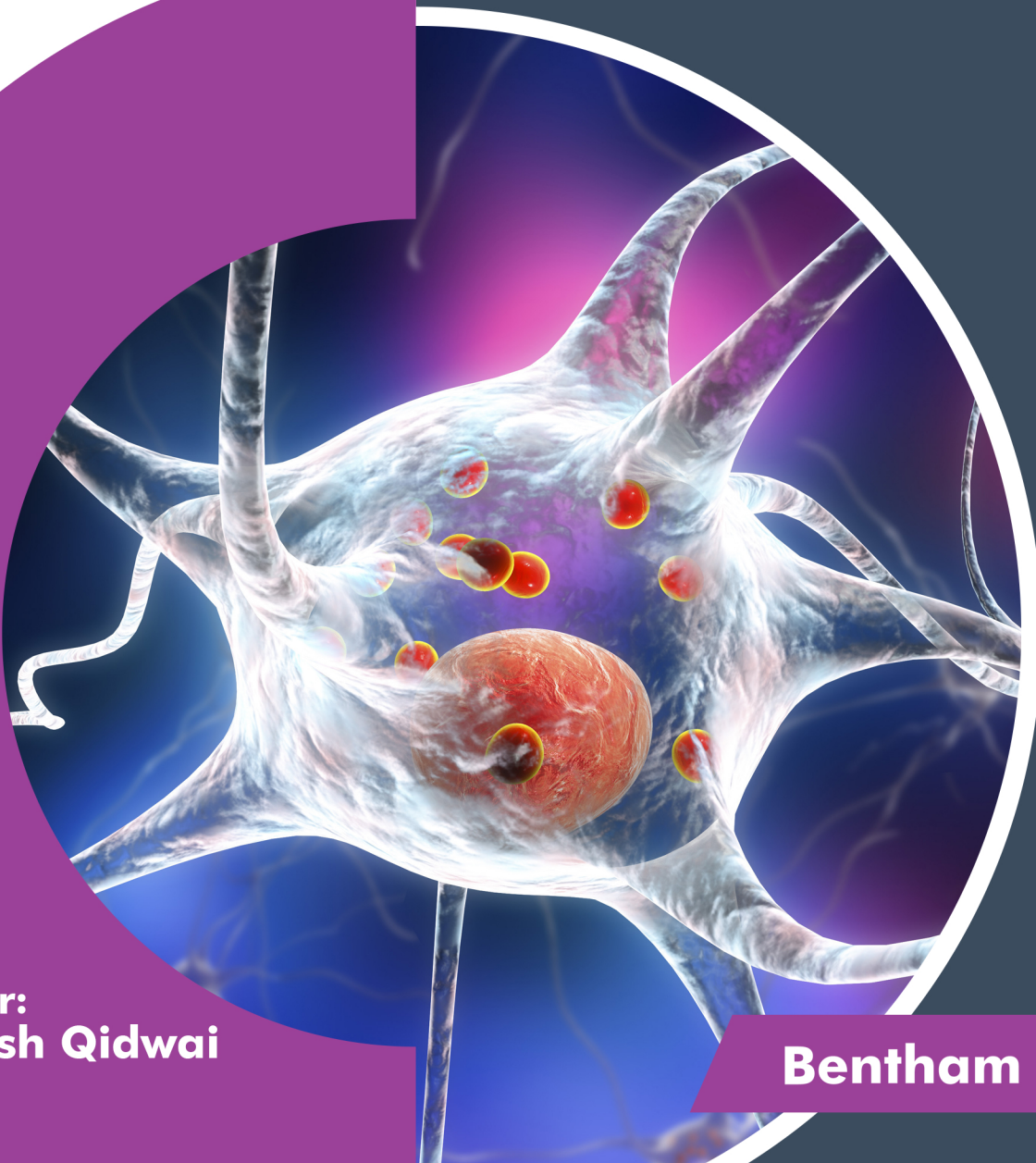


**NEURODEGENERATIVE DISEASES:**  
**MULTIFACTORIAL DEGENERATIVE PROCESSES,**  
**BIOMARKERS AND THERAPEUTIC APPROACHES**  
**FIRST EDITION**



**Editor:**  
**Tabish Qidwai**

**Bentham Books**

**Neurodegenerative Diseases:  
Multifactorial Degenerative  
Processes, Biomarkers and  
Therapeutic Approaches**  
**(First Edition)**

Edited by

**Tabish Qidwai**

*Faculty of Biotechnology,  
Shri Ramswaroop Memorial University,  
Lucknow-Deva Road,  
U.P., India*

**Neurodegenerative Diseases: Multifactorial Degenerative Processes,  
Biomarkers and Therapeutic Approaches (First Edition)**

Editor: Tabish Qidwai

ISBN (Online): 978-981-5040-91-3

ISBN (Print): 978-981-5040-92-0

ISBN (Paperback): 978-981-5040-93-7

© 2022, Bentham Books imprint.

Published by Bentham Science Publishers Pte. Ltd. Singapore. All Rights Reserved.

First published in 2022.

## **BENTHAM SCIENCE PUBLISHERS LTD.**

### **End User License Agreement (for non-institutional, personal use)**

This is an agreement between you and Bentham Science Publishers Ltd. Please read this License Agreement carefully before using the book/echapter/ejournal (“**Work**”). Your use of the Work constitutes your agreement to the terms and conditions set forth in this License Agreement. If you do not agree to these terms and conditions then you should not use the Work.

Bentham Science Publishers agrees to grant you a non-exclusive, non-transferable limited license to use the Work subject to and in accordance with the following terms and conditions. This License Agreement is for non-library, personal use only. For a library / institutional / multi user license in respect of the Work, please contact: [permission@benthamscience.net](mailto:permission@benthamscience.net).

### **Usage Rules:**

1. All rights reserved: The Work is the subject of copyright and Bentham Science Publishers either owns the Work (and the copyright in it) or is licensed to distribute the Work. You shall not copy, reproduce, modify, remove, delete, augment, add to, publish, transmit, sell, resell, create derivative works from, or in any way exploit the Work or make the Work available for others to do any of the same, in any form or by any means, in whole or in part, in each case without the prior written permission of Bentham Science Publishers, unless stated otherwise in this License Agreement.
2. You may download a copy of the Work on one occasion to one personal computer (including tablet, laptop, desktop, or other such devices). You may make one back-up copy of the Work to avoid losing it.
3. The unauthorised use or distribution of copyrighted or other proprietary content is illegal and could subject you to liability for substantial money damages. You will be liable for any damage resulting from your misuse of the Work or any violation of this License Agreement, including any infringement by you of copyrights or proprietary rights.

### ***Disclaimer:***

Bentham Science Publishers does not guarantee that the information in the Work is error-free, or warrant that it will meet your requirements or that access to the Work will be uninterrupted or error-free. The Work is provided "as is" without warranty of any kind, either express or implied or statutory, including, without limitation, implied warranties of merchantability and fitness for a particular purpose. The entire risk as to the results and performance of the Work is assumed by you. No responsibility is assumed by Bentham Science Publishers, its staff, editors and/or authors for any injury and/or damage to persons or property as a matter of products liability, negligence or otherwise, or from any use or operation of any methods, products instruction, advertisements or ideas contained in the Work.

### ***Limitation of Liability:***

In no event will Bentham Science Publishers, its staff, editors and/or authors, be liable for any damages, including, without limitation, special, incidental and/or consequential damages and/or damages for lost data and/or profits arising out of (whether directly or indirectly) the use or inability to use the Work. The entire liability of Bentham Science Publishers shall be limited to the amount actually paid by you for the Work.

### **General:**

1. Any dispute or claim arising out of or in connection with this License Agreement or the Work (including non-contractual disputes or claims) will be governed by and construed in accordance with the laws of Singapore. Each party agrees that the courts of the state of Singapore shall have exclusive jurisdiction to settle any dispute or claim arising out of or in connection with this License Agreement or the Work (including non-contractual disputes or claims).
2. Your rights under this License Agreement will automatically terminate without notice and without the

need for a court order if at any point you breach any terms of this License Agreement. In no event will any delay or failure by Bentham Science Publishers in enforcing your compliance with this License Agreement constitute a waiver of any of its rights.

3. You acknowledge that you have read this License Agreement, and agree to be bound by its terms and conditions. To the extent that any other terms and conditions presented on any website of Bentham Science Publishers conflict with, or are inconsistent with, the terms and conditions set out in this License Agreement, you acknowledge that the terms and conditions set out in this License Agreement shall prevail.

**Bentham Science Publishers Pte. Ltd.**

80 Robinson Road #02-00

Singapore 068898

Singapore

Email: [subscriptions@benthamscience.net](mailto:subscriptions@benthamscience.net)



## CONTENTS

PREFACE .....	i
LIST OF CONTRIBUTORS .....	ii
<b>CHAPTER 1 NEURODEGENERATIVE DISEASES INVOLVE MULTIFACTORIAL INTERPLAY OF GENETICS AND ENVIRONMENTAL FACTORS .....</b>	<b>1</b>
<i>Tabish Qidwai</i>	
<b>INTRODUCTION .....</b>	<b>1</b>
<b>NEURODEGENERATIVE DISEASES INVOLVING MULTIFACTORIAL DEGENERATION .....</b>	<b>2</b>
Protein Misfolding and Aggregation in Neurodegenerative Diseases .....	3
<b>MITOCHONDRIAL DYSFUNCTION IN NEURODEGENERATIVE DISEASES .....</b>	<b>3</b>
Reactive Oxygen Species (ROS) Production and Neurodegeneration .....	4
<b>GENETICS, ENVIRONMENTAL FACTORS AND INDUCTION OF NEURODEGENERATIVE DISEASES .....</b>	<b>5</b>
<b>GENETIC FACTORS ASSOCIATED WITH NEURODEGENERATIVE DISORDERS ....</b>	<b>6</b>
Alzheimer's Disease .....	6
Parkinson's Disease .....	6
Huntington's Disease .....	7
Amyotrophic Lateral Sclerosis (ALS) .....	8
<b>ENVIRONMENTAL FACTORS: ETIOLOGICAL AND DISEASE-MODIFYING EFFECTS ON DISEASES .....</b>	<b>9</b>
<b>CONCLUDING REMARKS .....</b>	<b>9</b>
<b>CONSENT FOR PUBLICATION .....</b>	<b>10</b>
<b>CONFLICT OF INTEREST .....</b>	<b>10</b>
<b>ACKNOWLEDGEMENTS .....</b>	<b>10</b>
<b>REFERENCES .....</b>	<b>10</b>
<b>CHAPTER 2 COLLIGATION OF MITOCHONDRIA DYSFUNCTION AND NEURODEGENERATION: PARKINSON'S DISEASE .....</b>	<b>13</b>
<i>K Amrutha, Neelam Yadav and Sarika Singh</i>	
<b>INTRODUCTION .....</b>	<b>13</b>
<b>ROLE OF MITOCHONDRIA IN PD PATHOLOGY .....</b>	<b>15</b>
<b>MITOCHONDRIAL MUTATIONS IN PD PATHOLOGY .....</b>	<b>16</b>
<b>OTHER MUTATIONS RELATED TO MITOCHONDRIAL FUNCTIONS IN PD PATHOLOGY .....</b>	<b>17</b>
Parkin .....	17
PINK 1 and DJ-1 .....	18
$\alpha$ -Synuclein .....	18
Leucine-rich Repeat Kinase 2 (LRRK2) .....	19
<b>ROLE OF MITOCHONDRIA IN ENDOPLASMIC RETICULUM STRESS MEDIATED NEURODEGENERATIVE SIGNALLING IN PD PATHOLOGY .....</b>	<b>20</b>
<b>ROLE OF MITOCHONDRIA IN APOPTOTIC NEURODEGENERATIVE SIGNALLING IN PD PATHOLOGY .....</b>	<b>21</b>
<b>CONCLUSION AND FUTURE ASPECTS .....</b>	<b>22</b>
<b>CONSENT FOR PUBLICATION .....</b>	<b>23</b>
<b>CONFLICT OF INTEREST .....</b>	<b>23</b>
<b>ACKNOWLEDGEMENTS .....</b>	<b>23</b>
<b>REFERENCES .....</b>	<b>23</b>
<b>CHAPTER 3 PROTEIN AGGREGATION IN NEURODEGENERATIVE DISEASES .....</b>	<b>26</b>

Rishabh Chaudhary, Mujeeba Rehman, Vipul Agarwal, Arjun Singh Kaushik and  
Vikas Mishra

<b>INTRODUCTION</b> .....	26
<b>PROTEIN AGGREGATION IN NEURODEGENERATIVE DISEASES</b> .....	28
Alzheimer's Disease (AD) .....	30
<i>Amyloid <math>\beta</math>-Protein</i> .....	30
<i>Tau (<math>\tau</math>) Protein</i> .....	31
Familial Amyloid Polyneuropathy (FAP) .....	33
<i>Transthyretin (TTR)</i> .....	33
Parkinson's Disease (PD) .....	36
<i>Structure and Function of <math>\alpha</math>-syn</i> .....	36
Lewy Bodies .....	38
<i>Mechanisms of <math>\alpha</math>-Syn Misfolding and Aggregation</i> .....	38
Huntington's Disease (HD) .....	39
<i>Normal Htt and Mutant Htt</i> .....	40
<i>Pathogenesis of mHtt in HD</i> .....	40
<i>Protein Misfolding and Aggregation</i> .....	41
<i>Transcriptional and Axonal Transport Dysregulation</i> .....	41
<b>MITOCHONDRIAL DYSFUNCTION</b> .....	42
Amyotrophic Lateral Sclerosis (ALS) .....	42
<i>Superoxide Dismutase (SOD-1)</i> .....	43
Fused in Sarcoma/translocated in Liposarcoma (fus/tls) .....	44
<i>Chromosome 9 Open Reading Frame 72 (C9orf72)</i> .....	44
<i>Ubiquilin-2 (UBQLN-2)</i> .....	45
<i>Transactive Response DNA Binding Protein-43 (TDP-43)</i> .....	45
<b>CONCLUDING REMARKS</b> .....	46
<b>CONSENT FOR PUBLICATION</b> .....	46
<b>CONFLICT OF INTEREST</b> .....	46
<b>ACKNOWLEDGEMENTS</b> .....	46
<b>REFERENCES</b> .....	47
<b>CHAPTER 4 ROLE OF REACTIVE OXYGEN SPECIES IN NEURODEGENERATIVE DISEASES</b> .....	59
<i>Sukanya Tripathy, Sanjay Singh, Monisha Banerjee and Anand Prakash</i>	
<b>INTRODUCTION</b> .....	59
<b>WHAT ARE REACTIVE OXYGEN SPECIES?</b> .....	60
<b>ROLE OF ROS IN NEURODEGENERATION</b> .....	62
Alzheimer's Disease (AD) .....	62
Parkinson's Disease .....	64
Motor Neuron Disease .....	65
<b>ANTIOXIDANTS AS THERAPY FOR OXIDATIVE STRESS</b> .....	66
<b>CONCLUSION</b> .....	67
<b>CONSENT FOR PUBLICATION</b> .....	67
<b>CONFLICT OF INTEREST</b> .....	67
<b>ACKNOWLEDGEMENTS</b> .....	67
<b>REFERENCES</b> .....	67
<b>CHAPTER 5 PARKINSON DISEASE: MOLECULAR BIOLOGY, PATHOPHYSIOLOGY AND BIOMARKERS</b> .....	71
<i>Sarfraj Ahmad Siddiqui, Habiba and Md Arshad</i>	
<b>INTRODUCTION</b> .....	71
Parkinson's Disease (PD) .....	72

<b>GENETIC AND MOLECULAR BASIS OF PD</b> .....	72
Genetic and Epigenetic Factors of PD .....	72
Environmental Factors of PD .....	73
Molecular Mechanism of PD .....	73
Lewy Bodies and $\alpha$ -Synuclein Protein .....	74
Mitochondria Dysfunction in PD .....	74
Oxidative Stress .....	75
Dopamine Dysfunction in PD .....	75
Glutathione Transferase (GSTs) and Heat Shock Protein in PD .....	76
LRRK2 Gene in PD .....	76
Brain Areas Affected in PD .....	76
<b>BIOMARKERS OF PD</b> .....	77
Biochemical Biomarkers of Brain .....	77
<i>Dopamine System in PD</i> .....	77
$\alpha$ -Synuclein .....	78
Orexin .....	78
8-Hydroxy-20-Deoxyguanosine .....	79
Apolipoprotein A1 (ApoA1) .....	79
Proteasomal Activity .....	79
Metabolic Biomarker .....	79
Neuroimaging Biomarkers .....	80
Magnetic Resonance Imaging (MRI) .....	80
Positron Emission Tomography (PET) Imaging .....	80
Single-Photon Emission Computed Tomography (SPECT) .....	81
<b>CONCLUSION</b> .....	81
<b>CONSENT FOR PUBLICATION</b> .....	81
<b>CONFLICT OF INTEREST</b> .....	81
<b>ACKNOWLEDGEMENTS</b> .....	82
<b>REFERENCES</b> .....	82
<b>CHAPTER 6 ALZHEIMER'S DISEASE: MOLECULAR BIOLOGY, PATHOPHYSIOLOGY AND BIOMARKERS</b> .....	88
<i>Yoganchal Mishra, Sarika Singh and Neelam Yadav</i>	
<b>INTRODUCTION</b> .....	88
Risk Factors for AD .....	89
Molecular Genetics of AD Pathogenesis .....	90
Pathophysiology of AD .....	90
Cholinergic Disruption .....	92
Oxidative Stress .....	92
Hyperphosphorylated Tau Protein and Amyloid $\beta$ Cascade .....	92
Metal Dysregulation .....	92
Biomarkers for AD .....	93
Fluid Biomarkers for AD .....	94
Galanthamine .....	94
Antibodies .....	94
Cannabinoids .....	94
Multi-target-directed Ligand (MTDL) .....	94
Polyphenolic Compounds .....	95
Metals .....	95
Metal Complexes .....	95
Stem Cells .....	95



<b>CONCLUSION</b> .....	95
<b>CONSENT FOR PUBLICATION</b> .....	96
<b>CONFLICT OF INTEREST</b> .....	96
<b>ACKNOWLEDGEMENTS</b> .....	96
<b>REFERENCES</b> .....	96
<b>CHAPTER 7 HUNTINGTON'S DISEASE: MOLECULAR BASIS, PATHOPHYSIOLOGY AND BIOMARKER</b> .....	99
<i>Sarfraj Ahmad Siddiqui and Anand Prakash</i>	
<b>INTRODUCTION</b> .....	99
Huntingtin Disease .....	100
Genetic and Molecular Basis of Huntingtin Disease .....	101
Molecular Mechanism of Huntingtin Protein in HD .....	103
Brain Areas Affected in HD .....	104
Basal Ganglia .....	105
mHtt Protein Causes Impaired Transcription Functions .....	105
Post-translational Modifications of HTT .....	105
Pathophysiology of Huntingtin Disease .....	106
Biomarkers of Huntingtin Disease .....	106
Clinical Biomarkers .....	107
Neuroimaging Biomarkers .....	107
<b>THERAPEUTIC APPROACHES OF HD</b> .....	109
Post Translational Modification and Degradation of mutHTT Protein .....	109
Modulation of Signalling Pathways .....	110
Transcriptional Regulation of mutHTT .....	110
Clinical Availability of HD Therapeutics .....	111
<b>CONCLUSION</b> .....	111
<b>CONSENT FOR PUBLICATION</b> .....	112
<b>CONFLICT OF INTEREST</b> .....	112
<b>ACKNOWLEDGEMENTS</b> .....	112
<b>REFERENCES</b> .....	112
<b>CHAPTER 8 MULTIPLE SCLEROSIS: MOLECULAR BIOLOGY, PATHOPHYSIOLOGY AND BIOMARKERS</b> .....	115
<i>Sanjay Singh, Sukanya Tripathy and Anand Prakash</i>	
<b>INTRODUCTION</b> .....	115
Relapsing-remitting Multiple Sclerosis (RRMS) .....	116
Primary-progressive Multiple Sclerosis (PPMS) .....	117
Secondary-progressive Multiple Sclerosis (SPMS) .....	117
Clinically Isolated Syndrome (CIS) .....	117
<b>MOLECULAR ASPECT OF DISEASE</b> .....	117
<b>PATHOPHYSIOLOGY</b> .....	118
Induction of Inflammation in the Brain .....	118
The Mechanisms of Primary Demyelination .....	119
Axonal Injury in Multiple Sclerosis .....	120
<b>BIOMARKERS OF DISEASE</b> .....	121
The Laboratory Biomarkers .....	121
Imaging Biomarkers .....	122
Genetic-immunogenetic Biomarkers .....	122
<b>CONCLUSION</b> .....	122
<b>CONSENT FOR PUBLICATION</b> .....	123
<b>CONFLICT OF INTEREST</b> .....	123

ACKNOWLEDGEMENTS .....	123
REFERENCES .....	123
<b>CHAPTER 9 MOLECULAR DIAGNOSTICS AND IMMUNOLOGICAL MARKERS OF NEURODEGENERATIVE DISORDERS .....</b>	<b>125</b>
<i>Subhadip Chakraborty</i>	
<b>INTRODUCTION .....</b>	<b>125</b>
What is Molecular Diagnostics? .....	126
Molecular Diagnostics of Neurological Disorders and Diseases .....	127
Transmissible Spongiform Encephalopathies (TSEs) .....	129
Alzheimer's Disease .....	131
Parkinson's Disease .....	132
Dystonia .....	135
Huntington Disease .....	135
Glaucoma .....	137
Immunological Markers for Neurodegenerative Diseases .....	138
<b>CONCLUSION .....</b>	<b>139</b>
<b>CONSENT FOR PUBLICATION .....</b>	<b>140</b>
<b>CONFLICT OF INTEREST .....</b>	<b>140</b>
<b>ACKNOWLEDGEMENTS .....</b>	<b>140</b>
<b>REFERENCES .....</b>	<b>140</b>
<b>CHAPTER 10 OMICS FOR BIOMARKER INVESTIGATION IN NEURODEGENERATIVE DISEASES .....</b>	<b>143</b>
<i>Aiman Tanveer and Dinesh Yadav</i>	
<b>INTRODUCTION .....</b>	<b>143</b>
<b>BIOMARKERS IN NEURODEGENERATIVE DISEASE .....</b>	<b>144</b>
<b>GENOMICS .....</b>	<b>145</b>
Array CGH .....	146
Gene Expression Profiling .....	146
Single Nucleotide Polymorphisms .....	148
<b>PROTEOMICS .....</b>	<b>148</b>
Separation of Protein Samples .....	148
Sample Analysis .....	149
Biomarker Validation using Proteomics .....	150
<b>METABOLOMICS .....</b>	<b>151</b>
Tools and Techniques in Metabolomics .....	151
<i>Nuclear Magnetic Resonance Spectroscopy</i> .....	152
<i>Mass Spectrometry</i> .....	152
Metabolomics Based Biomarker Discovery .....	153
<b>CONCLUDING REMARKS AND FUTURE PERSPECTIVES .....</b>	<b>154</b>
<b>CONSENT FOR PUBLICATION .....</b>	<b>155</b>
<b>CONFLICT OF INTEREST .....</b>	<b>155</b>
<b>ACKNOWLEDGEMENTS .....</b>	<b>156</b>
<b>REFERENCES .....</b>	<b>156</b>
<b>CHAPTER 11 EMERGING THERAPEUTIC APPROACHES FOR NEURODEGENERATIVE DISEASES .....</b>	<b>161</b>
<i>Rajesh R. Ugale and Lopmudra Sarode</i>	
<b>INTRODUCTION .....</b>	<b>161</b>
mTOR Signaling .....	163
Autophagy Stimulators .....	164

Leukotriene Signaling .....	165
Toll Like Receptors .....	166
Purinergic Signaling .....	167
<b>LRRK2</b> .....	167
Mac1–NOX2 Signaling .....	168
SQSTM1/p62 Signaling .....	168
Phosphodiesterase Inhibitors .....	170
Sirtuins .....	170
Nuclear Factor-erythroid 2-related Factor 2 .....	171
Heat Shock Proteins (Hsp) .....	171
Sestrins .....	172
Glymphatic System .....	173
Metal Chelators .....	173
miRNAs .....	175
Anticancer Agents .....	176
Natural Compounds .....	176
<b>CONCLUDING REMARKS</b> .....	177
<b>GREEK SYMBOLS/SPECIAL CHARACTERS</b> .....	178
<b>LIST OF ABBREVIATIONS</b> .....	178
<b>CONSENT FOR PUBLICATION</b> .....	179
<b>CONFLICT OF INTEREST</b> .....	179
<b>ACKNOWLEDGEMENTS</b> .....	179
<b>REFERENCES</b> .....	179
<b>CHAPTER 12 MEDICINAL PLANTS AND NATURAL COMPOUNDS AS ANTIPARKINSONIAN AGENTS</b> .....	199
<i>Walia Zahra, Hareram Birla, Saumitra Sen Singh, Aaina Singh Rathore, Hagera Dilnashin, Richa Singh, Priyanka Kumari Keshri and Surya Pratap Singh</i>	
<b>INTRODUCTION</b> .....	199
<b>FACTORS RESPONSIBLE FOR NEUROPROTECTION BY MEDICINAL PLANTS AND THEIR DERIVATIVES</b> .....	202
Pharmacological Activities of Polyphenols in Managing PD Pathology .....	202
Inhibition of $\alpha$ -synuclein aggregation in PD .....	202
Amelioration of Oxidative Damage by Polyphenols in PD .....	203
Anti-inflammatory Activity of Medicinal Plants and Derivatives .....	204
Antiapoptotic Activity by Secondary Metabolite in PD .....	204
Monoamine Oxidase Inhibition by Secondary Metabolites in PD .....	204
Neuroprotection Offered by Medicinal Plants and their Derivatives .....	205
<b>CONCLUSION</b> .....	210
<b>CONSENT FOR PUBLICATION</b> .....	210
<b>CONFLICT OF INTEREST</b> .....	210
<b>ACKNOWLEDGEMENTS</b> .....	210
<b>REFERENCES</b> .....	210
<b>CHAPTER 13 NEUROPHARMACOLOGY IN ALZHEIMER AND HUNTINGTON DISEASE</b> .....	218
<i>Bandna Gupta and Kopal Rohatgi</i>	
<b>INTRODUCTION</b> .....	219
<b>ALZHEIMERS DISEASE</b> .....	219
<b>NEUROPATHOLOGY OF AD</b> .....	220
The Cholinergic Hypothesis .....	221
<b>DIAGNOSIS AND MANAGEMENT</b> .....	221
<b>THERAPEUTIC APPROACHES</b> .....	222

<b>MODULATING NEUROTRANSMISSION</b> .....	222
Cholinesterase Inhibitors .....	222
N-methyl-D-aspartate Antagonist .....	224
GABAergic Modulation .....	225
Serotonin Receptor Modulation .....	225
Histaminergic Modulation .....	226
Adenosine Receptor Modulation .....	226
<b>AMYLOID TARGETED STRATEGIES</b> .....	226
Decreasing Ab Production-Secretase Modifiers .....	227
$\beta$ Secretase Inhibitors .....	227
$\alpha$ -Secretase Activators/Modulators .....	227
$\gamma$ -Secretase Inhibitors and Modulators .....	227
Decreasing Ab Aggregation .....	228
Increasing Ab Clearance .....	228
Modulating Ab Transport .....	229
Amyloid Targeted Immunotherapy .....	229
<b>TAU-BASED THERAPIES</b> .....	230
Targeting tau Phosphorylation .....	230
Microtubule Stabilization .....	230
Preventing Tau Oligomerization .....	231
Tau Degradation .....	231
Tau Immunotherapy .....	231
<b>TARGETING INTRACELLULAR SIGNALING CASCADES</b> .....	231
<b>OXIDATIVE STRESS REDUCTION</b> .....	232
Tackling Oxidative Stress .....	232
Facilitating Endogenous Antioxidant Defense .....	232
<b>MITOCHONDRIA SPECIFIC THERAPY</b> .....	232
<b>TARGETING CELLULAR CALCIUM HOMEOSTASIS</b> .....	233
<b>ANTI-INFLAMMATORY THERAPY</b> .....	233
Anti-inflammatory Drugs .....	233
<b>MISCELLANEOUS</b> .....	233
Gonadotropins .....	233
<i>Hormone Replacement Therapy</i> .....	233
Lipid Modifying Therapy .....	234
Growth Factors .....	234
Nucleic acid drugs .....	234
Selegiline .....	235
Vitamin E .....	235
Folate deficiency and hyperhomocysteinaemia .....	235
List of Therapeutic Agents used at various Steps of AD Pathogenesis. ....	235
Medicinal plants used for the treatment of Alzheimer's disease .....	235
<b>FUTURE RESEARCH</b> .....	236
GV-971 (Oligomannate) .....	236
Aducanumab (BIIB037) .....	237
Mitogen-Activated Protein Kinase (MAPK) .....	237
<b>INFLAMMATORY AGENTS (PHASE 3)</b> .....	237
Newer Modalities .....	238
<i>Losartan-Amlodipine-Atorvastatin-Exercise</i> .....	238
<b>STEM CELL THERAPIES</b> .....	238
<b>BEHAVIOURAL AND EFFECTIVE SYMPTOMS</b> .....	238
<b>NONPHARMACOLOGICAL INTERVENTIONS</b> .....	239

<b>HUNTINGTON'S DISEASE</b> .....	240
The symptom presentation of HD disease can be broadly divided into three categories .....	241
Management of Motor Symptoms .....	241
Chorea .....	241
1) TETRABENAZINE (TBZ) .....	241
2) NMDA Antagonist .....	241
3) Dopamine Antagonist .....	242
4) Benzodiazepines .....	242
5) Antiparkinsonian Medications .....	242
6) Botulinum Toxin Injections .....	242
Drug of choice in patients of HD with chorea (special conditions with chorea and their specific management) .....	243
Behavioural and Psychiatric Disturbances in HD .....	243
<b>NEWER TREATMENTS</b> .....	243
<b>FURTHER RESEARCH IN HD HAS BEEN GOING ON IN THE FOLLOWING AREAS</b> .....	244
1) Dopamine-Stabilizing Agent Pridopidine .....	244
2) Laquinimod .....	244
3) Phosphodiesterase 10A Inhibitor .....	244
4) PBT2 .....	244
5) Deuterated form of TBZ, SD-809 .....	244
6) Supplements that may Affect Metabolism or Mitochondrial Function [157] .....	244
7) Selisistat .....	245
Additionally, other drugs currently being investigated for their use in HD include .....	245
Genetic Approaches .....	245
RNA as Target .....	245
2) RNA Interference (RNAi): Small Interfering RNA (siRNA), Short Hairpin RNA, MicroRNA (miRNA) .....	246
3) Nucleic Acid Aptamers .....	246
Small Molecules Targeting RNA .....	246
DNA as Target .....	246
1) Zinc Finger Proteins .....	246
2) Transcription Activator-Like Effectors .....	246
3) Clustered Regularly Interspaced Short Palindromic Repeats (CRISPR) Cas9 .....	246
<b>CONCLUSION</b> .....	247
<b>LIST OF ABBREVIATIONS</b> .....	248
<b>CONSENT FOR PUBLICATION</b> .....	248
<b>CONFLICT OF INTEREST</b> .....	248
<b>ACKNOWLEDGEMENTS</b> .....	249
<b>REFERENCES</b> .....	249

<b>CHAPTER 14 BRIEF DESCRIPTION OF PUBLIC HEALTH AND BURDEN OF NEURODEGENERATIVE DISEASES</b> .....	261
<i>Vandana Ranjan, Aisha and Kalpna Verma</i>	
<b>INTRODUCTION</b> .....	261
<b>STAKEHOLDERS IN PUBLIC HEALTH</b> .....	263
<b>GLOBAL BURDEN OF NEUROLOGICAL DISORDERS</b> .....	264
<b>NEURODEGENERATIVE DISEASES IN PUBLIC HEALTH DOMAIN</b> .....	266
<b>CHALLENGES AND PUBLIC HEALTH POLICIES</b> .....	269
<b>CONSENT FOR PUBLICATION</b> .....	271
<b>CONFLICT OF INTEREST</b> .....	271
<b>ACKNOWLEDGEMENTS</b> .....	271

<b>REFERENCES</b> .....	271
<b>SUBJECT INDEX</b> .....	295

## PREFACE

There are fourteen chapters in this book entitled " Neurodegenerative Diseases: Multifactorial Degenerative Processes, Biomarkers and Therapeutic Approaches." The book focuses on the current trends in pathophysiology, biomarkers, and therapeutic approaches for neurodegenerative diseases.

The goal of this book is to give readers an overview of multiple degenerative mechanisms in neurodegeneration, as well as biomarkers and therapeutic possibilities. The book is aimed to target students, research scholars, and neuro physicians who are interested in the topic. The book's structure is well-organized and updated.

This book is divided into three sections, each of which covers a different facet of the disease. Part I, which contains four chapters, is about multifactorial degenerative processes in neurodegenerative diseases; chapter 1 by Tabish Qidwai discusses multifactorial degeneration and the role of genetic and environmental factors in neurodegenerative diseases.

Sarika Singh *et al.* in chapter 2 outline the role of mitochondrial dysfunction. Chapter 3 by Mishra *et al.* presents the role of protein aggregation in neurodegenerative diseases. In chapter 4, Prakash *et al.*, describe the reactive oxygen species in neurodegenerative diseases.

Part-II is focussed on pathophysiology, and biomarkers in neurodegenerative diseases. This part consists of six chapters; molecular biology, pathophysiology, and biomarkers of Parkinson's disease are discussed in chapter 5 by Arshad *et al.* In the chapter 6, Yadav *et al.*, discuss the molecular basis, pathophysiology and biomarkers of Alzheimer's disease. Chapter 7 by Siddiqui reviews the molecular basis, pathophysiology and biomarker of Huntington's disease. Prakash *et al.*, in chapter 8, describes the molecular biology, pathophysiology and biomarkers of multiple sclerosis. Chapter 9, by Subhadip Chakraborty, discusses the molecular diagnostics and immunological markers of neurodegenerative diseases. In chapter 10, Dinesh Yadav describes the omics approaches for biomarkers investigation in neurodegenerative diseases.

Part-III of the book covers the therapeutic approaches for neurodegenerative diseases, this part consists of four chapters; In Chapter 11, Rajesh Ugale focuses on emerging therapeutic approaches for neurodegenerative diseases. Chapter 12 by Singh *et al.*, reviews the role of medicinal plants and natural compounds as antiparkinson agents. In chapter 13, Bandana outlines the neuropharmacology approach in Alzheimer's and Huntington's disease. The last chapter by Vandana *et al.*, describes the description of public health and the burden of neurodegenerative diseases.

This book, I believe, will be of tremendous interest to students, doctors, researchers, and even patients and their families. Finally, I would like to express my gratitude to all of the contributors to this book, as well as the Bentham Publishing Editorial Board for providing us with this invaluable opportunity.

**Tabish Qidwai**  
Faculty of Biotechnology  
Shri Ramswaroop Memorial University  
Lucknow-Deva Road, U.P. India

## List of Contributors

<b>Aaina Singh Rathore</b>	Department of Biochemistry, Institute of Science, Banaras Hindu University, Varanasi-221005, India
<b>Aiman Tanveer</b>	Department of Biotechnology, DDU Gorakhpur University, Gorakhpur, India
<b>Aisha</b>	Department of Biochemistry, Dr. Ram Manohar Lohia Avadh University, Faizabad, UP, India
<b>Amrutha K</b>	Department of Neuroscience and Ageing Biology and Division of Toxicology and Experimental Medicine, CSIR-Central Drug Research Institute, Lucknow – 226031, India
<b>Anand Prakash</b>	Department of Biotechnology, Mahatma Gandhi Central University Bihar, Motihari, India
<b>Arjun Singh Kaushik</b>	Department of Pharmaceutical Sciences, Babasaheb Bhimrao Ambedkar University, Vidya Vihar, Raebareli Road, Lucknow-226025, (U.P.), India
<b>Bandna Gupta</b>	Department of Psychiatry, King George’s Medical University, Lucknow, India
<b>Dinesh Yadav</b>	Department of Biotechnology, DDU Gorakhpur University, Gorakhpur, India
<b>Habiba Md Arshad</b>	Department of Zoology, Aligarh Muslim University, Aligarh, India
<b>Hagera Dlnashin</b>	Department of Biochemistry, Institute of Science, Banaras Hindu University, Varanasi-221005, India
<b>Hareram Birla</b>	Department of Biochemistry, Institute of Science, Banaras Hindu University, Varanasi-221005, India
<b>Kalpna Verma</b>	Department of Biochemistry, Dr. Ram Manohar Lohia Avadh University, Faizabad, UP, India
<b>Kopal Rohatgi</b>	Department of Psychiatry, King George’s Medical University, Lucknow, India
<b>Lopmudra Sarode</b>	Department of Pharmaceutical Sciences, Rashtrasant Tukadoji Maharaj Nagpur University, Nagpur (MS), India
<b>Monisha Banerjee</b>	Molecular & Human Genetics Laboratory, Department of Zoology, University of Lucknow, Lucknow, India
<b>Mujeeba Rehman</b>	Department of Pharmaceutical Sciences, Babasaheb Bhimrao Ambedkar University, Vidya Vihar, Raebareli Road, Lucknow-226025, (U.P.), India
<b>Neelam Yadav</b>	Department of Biochemistry, Dr. Rammanohar Lohia Avadh University, Ayodhya-224001, India
<b>Priyanka Kumari Keshri</b>	Department of Biochemistry, Institute of Science, Banaras Hindu University, Varanasi-221005, India
<b>Rajesh R. Ugale</b>	Department of Pharmaceutical Sciences, Rashtrasant Tukadoji Maharaj Nagpur University, Nagpur (MS), India
<b>Richa Singh</b>	Department of Biochemistry, Institute of Science, Banaras Hindu University, Varanasi-221005, India
<b>Rishabh Chaudhary</b>	Department of Pharmaceutical Sciences, Babasaheb Bhimrao Ambedkar University, Vidya Vihar, Raebareli Road, Lucknow-226025, (U.P.), India



<b>Sanjay Singh</b>	Department of Biotechnology, Babasaheb Bhimrao Ambedkar University, Lucknow, India
<b>Sarfraj Ahmad Siddiqui</b>	Department of Zoology, University of Lucknow, Lucknow, India
<b>Sarika Singh</b>	Department of Neuroscience and Ageing Biology and Division of Toxicology and Experimental Medicine, CSIR-Central Drug Research Institute, Lucknow – 226031, India
<b>Saumitra Sen Singh</b>	Department of Biochemistry, Institute of Science, Banaras Hindu University, Varanasi-221005, India
<b>Subhadip Chakraborty</b>	Department of Botany, Nabadwip Vidyasagar College, Nadia, West Bengal, India
<b>Sukanya Tripathy</b>	Molecular & Human Genetics Laboratory, Department of Zoology, University of Lucknow, Lucknow, India Department of Biotechnology, Babasaheb Bhimrao Ambedkar University, Lucknow, India
<b>Surya Pratap Singh</b>	Department of Biochemistry, Institute of Science, Banaras Hindu University, Varanasi-221005, India
<b>Tabish Qidwai</b>	Faculty of Biotechnology, IBST, Shri Ramswaroop Memorial University, Lucknow-Deva Road, UP, India
<b>Vandana Ranjan</b>	Department of Biochemistry, Dr. Ram Manohar Lohia Avadh University, Faizabad, UP, India
<b>Vikas Mishra</b>	Department of Pharmaceutical Sciences, Babasaheb Bhimrao Ambedkar University, Vidya Vihar, Raebareli Road, Lucknow-226025, (U.P.), India
<b>Vipul Agarwal</b>	Department of Pharmaceutical Sciences, Babasaheb Bhimrao Ambedkar University, Vidya Vihar, Raebareli Road, Lucknow-226025, (U.P.), India
<b>Walia Zahra</b>	Department of Biochemistry, Institute of Science, Banaras Hindu University, Varanasi-221005, India
<b>Yoganchal Mishra</b>	Department of Biochemistry, Dr. Rammanohar Lohia Avadh University, Ayodhya-224001, India

**CHAPTER 1****Neurodegenerative Diseases Involve Multifactorial Interplay of Genetics and Environmental Factors****Tabish Qidwai<sup>1,\*</sup>**<sup>1</sup> Faculty of Biotechnology, IBST, Shri Ramswaroop Memorial University, Lucknow-Deva Road, UP, India

**Abstract:** Neurodegenerative diseases are one of the leading causes of morbidity and disability worldwide, afflicting millions of individuals. These diseases emerge as a result of multiple factors, sharing pathogenic pathway that includes mitochondrial dysfunction, misfolded protein aggregation, and oxidative stress. Genetic and environmental factors have been identified to play a key role in neurodegeneration and modifying the risk of the disease. The association of neurodegenerative diseases to genetic factors and environmental agent's exposure is not well conclusive. As a consequence, studying the interplay of genetic and environmental factors in neurodegenerative diseases can help researchers better understand gene and therapy and disease progression. In this chapter, an attempt has been made to discuss the multifactorial degenerative process and the role of genetic and environmental factors in common neurodegenerative diseases. Understanding the mechanisms of disease initiation and progression is crucial for disease prevention and modification of disease risk. These information would be helpful in the exploration of therapeutic options against these diseases.

**Keywords:** Environmental factors, Genetic factors, Multifactorial, Mitochondrial dysfunction, Neurodegenerative diseases, Protein aggregation, Reactive oxygen species, Risk of disease, Therapeutics.

**INTRODUCTION**

Neurodegenerative diseases are the leading cause of morbidity and disability. Researchers are giving special attention to these diseases as they impose a considerable socioeconomic impact. Millions of people throughout the world suffer from neurodegenerative diseases. Alzheimer's disease (AD), Parkinson's disease (PD), Huntington's disease (HD), and amyotrophic lateral sclerosis (ALS) are all common neurodegenerative diseases. These diseases result in a variety of

---

\* Corresponding author **Tabish Qidwai:** Faculty of Biotechnology, IBST, Shri Ramswaroop Memorial University, Lucknow-Deva Road, Barabanki, UP, India; Tel: +91-9140631326; E-mail: tabish.iet@gmail.com

illnesses with varied etiologies and morphological and pathophysiological characteristics. The most commonly reported neurodegenerative diseases are Alzheimer's and Parkinson's diseases, which rank first and second, respectively, among neurodegenerative diseases. Over the course of its five-year plan, the World Health Organization (WHO) has adopted a specific push for Mental Health, with the goal of increasing treatment coverage for mental health problems for one hundred million additional individuals [1]. It has been identified that abnormal protein dynamics, including incorrect protein breakdown and aggregation, oxidative stress and free radical formation, bioenergetic impairment, and mitochondrial malfunction are all factors that contribute to neurodegenerative diseases. Aggregation and deposition of misfolded proteins, oxidative stress and mitochondrial dysfunction cause deterioration of the central nervous system [2].

Neurodegenerative disorders are multifactorial disorders including the interplay of aging, genetics and environmental factors. Genetic and environmental factors have been shown to play a key role in neurodegenerative diseases. The role of genetic factors is central to the etiology of neurodegeneration. Identification of disease genes and risk loci has contributed a lot to medicine. Genome wide association studies have increased our knowledge of the genome and the genetics of neurodegenerative disease. Studies have identified that genetics is targeting to find new disease-modifying therapies for neurodegenerative diseases. Certain genetic polymorphisms and increasing age are identified as risk factors for neurodegenerative disease. Other likely reasons might comprise gender, oxidative stress, inflammation, stroke, hypertension, diabetes, smoking, head trauma, and chemical exposure. In addition to this, exposure to metal toxicity and pesticides are responsible for the appearance of neurodegenerative diseases, we should focus on environmental factors in these diseases [3]. The pathogenesis of many of these diseases remains unknown. The association between environmental agent's exposure and neurodegenerative diseases is not well explored and conclusive. Besides, the role of genetic factors in neurodegenerative diseases is not investigated quite well. Exploration of genetic factors and environmental factors would be important in the identification of risk factors and effective therapeutics in neurodegenerative diseases. This chapter covers the genetic and environmental factors associated with neurodegenerative diseases. Moreover, the multifactorial nature of diseases has been covered.

## **NEURODEGENERATIVE DISEASES INVOLVING MULTIFACTORIAL DEGENERATION**

Neurodegenerative diseases such as AD, PD, HD and ALS, *etc.* are multifactorial in nature. They rely on a common pathogenetic mechanism involving aggregation and deposition of misfolded proteins, oxidative stress and mitochondrial

dysfunction leading to the deterioration of the central nervous system [2]. Identification of the basic etiology of these diseases would be important in therapies against them. Despite the fact that each disease has its own molecular mechanism and clinical manifestations, several common pathways may be found in various pathogenic cascades [2]. Neurodegenerative diseases are multifactorial degenerative process, hence interplay of several factors have been evidenced (Fig. 1). Misfolding and non-functional protein trafficking are the causes of diseases including Alzheimer's, Parkinson's, and Huntington's. Moreover, mitochondrial dysfunction, oxidative stress, and/or environmental factors have shown a strong association with age implicated in neurodegeneration. Mutations in several human genes have been associated to neurodegenerative diseases.

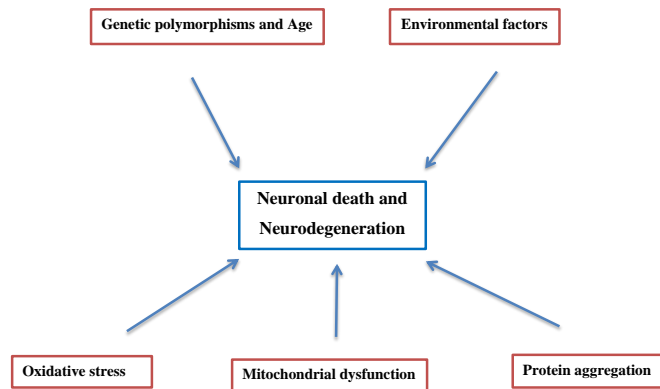


Fig. (1). This Fig represents the factors associated with neurodegenerative diseases.

### Protein Misfolding and Aggregation in Neurodegenerative Diseases

Stable conformation of the protein is necessary for the biological function of the protein. Protein folding is a complex process, guided by a molecular chaperone. Protein folding is linked to gene transcription, protein biosynthesis, post-translational modifications, ubiquitin-proteasome system destruction, and autophagy. Disturbance in protein homeostasis will lead to protein misfolding this is the pathogenic underpinning of the most neurodegenerative diseases. Misfolded proteins frequently aggregate and accumulate, producing neurotoxicity and causing neurodegenerative diseases [3, 4].

### MITOCHONDRIAL DYSFUNCTION IN NEURODEGENERATIVE DISEASES

Cell death is a key feature of neurodegenerative diseases which is centrally regulated by the mitochondria. A key role of mitochondria has been identified in ageing-related neurodegenerative diseases [4]. Mitochondrial DNA mutation and

**CHAPTER 2****Colligation of Mitochondria Dysfunction and Neurodegeneration: Parkinson's Disease****K Amrutha<sup>1</sup>, Neelam Yadav<sup>2</sup> and Sarika Singh<sup>1\*</sup>**<sup>1</sup> *Department of Neuroscience and Ageing Biology and Division of Toxicology and Experimental Medicine, CSIR-Central Drug Research Institute, Lucknow – 226031, India*<sup>2</sup> *Department of Biochemistry, RML University, Faizabad, UP, India*

**Abstract:** Parkinson's disease (PD) is a first most common motor neurodegenerative disorder and caused due to degeneration of dopaminergic neurons of nigrostriatal pathway of brain. Brain is the most active organ of human body which receives, process and command the responses utilizing approximately twenty percent of body's total energy. Mitochondrion is the cellular powerhouse produces ATP by utilizing various complexes of electron transport chain. This ATP is the energy source of cells and is being used for physiological functions of the cells, indicating the critical role of mitochondrial functionality in cellular physiology. In PD pathology the impaired bioenergetics is the known and critical factor which essentially requires for cellular physiological responses and failed to maintain it will lead to self-destruction of cell, termed as apoptosis. Neuronal apoptosis is the inescapable event in PD pathology and suggest the implications of cellular bioenergetics and the close conjunction of mitochondrion functionality and disease pathology. In this chapter mitochondrion functionality and its correlation with various neurodegenerative signalling pathways during PD pathology will be discussed.

**Keywords:** Mitochondrial dysfunction, Neurodegeneration, Parkinson's disease (PD), Pathology.

**INTRODUCTION**

Parkinson's disease (PD) is the most common motor neurodegenerative disease characterized by preferential loss of dopaminergic neurons of the nigrostriatal pathway that leads to the dopamine deficiency in the substantia nigra (SN) and striatum regions of brain. In spite of research of several decades the information regarding disease onset and its pathological markers is limited. Among known pathological marker the presence of Lewy bodies containing  $\alpha$ -synuclein, an

---

\* **Corresponding author Sarika Singh:** Department of Neuroscience and Ageing Biology and Division of Toxicology and Experimental Medicine, CSIR-Central Drug Research Institute, Lucknow – 226031, India; E-mail: sarika\_singh@cdri.res.in

intracellular protein, is well accepted in PD pathology [1]. In regard to symptoms, PD pathology exhibit both motor and non-motor symptoms. The classical parkinsonian motor symptoms include bradykinesia, resting tremor, rigidity and postural instability [1]. The non-motor symptoms include sleep disturbances, depression, cognitive deficits, and autonomic & sensory dysfunction which may be psychological effects along with specific effects of disease onset [1]. In spite of the advancing research on the PD pathology, the exact cause and mechanism behind the PD pathogenesis is still mysterious and need further evaluations. To date various etiological reasons have been suggested by the researchers to be implicated at both cellular as well as genetic level in the disease pathology but still lacunae exist. The concept of mitochondrial dysfunction in PD pathology was identified in 1980s with unwanted generation of 1-methyl-4-phenyl-1,2,5,6-tetrahydropyridine (MPTP) during synthesis of heroin. MPTP itself is not toxic but able to cross the blood brain barrier and in brain processed with enzyme monoamine oxidase B (MAO-B) to form the toxic cation 1-methyl-4-phenylpyridinium (MPP<sup>+</sup>). MPP<sup>+</sup> is toxic to brain cells as it is selectively taken up by dopaminergic cells and inhibits multiple complexes of the respiratory chain [2] therefore, inhibiting the ATP synthesis or mitochondrial functionality. This finding of 1980s is still significant as MPTP is still being utilized to induce the PD pathology in rodents to understand the disease mechanisms [2].

While considering the genetic aspects, PD can be caused by mutations in genes identified by linkage analyses that are inherited in an autosomal recessive or dominant manner. Mutations in the genes encoding  $\alpha$ -synuclein and LRRK2 (leucine-rich repeat kinase 2) are responsible for autosomal dominant forms of PD, presumably by a gain-of-function mechanism. Other mutation implies to loss-of-function which involve mutations in the genes encoding Parkin, PINK1, and DJ-1, which cause functional impairment of mitochondrion and mediates the autosomal recessive PD [1]. Such PD associated functional impairment of mitochondrion caused significant progressive damage to neurons involving various signaling mechanisms mostly involving the ATP driven mechanisms. The major mechanisms which have been investigated in disease pathology are oxidative stress, protein aggregation and degradation mechanisms, compromised protein synthesis and trafficking, alterations in mitochondrial dynamics, affected calcium homeostasis, defective autophagy, DNA damage and initiation of cellular death pathways. In the following section we are focusing on mitochondrial functionality in PD pathology and its correlation with other neurodegenerative signaling pathways during disease pathology.

## ROLE OF MITOCHONDRIA IN PD PATHOLOGY

Mitochondria are double membrane bound organelles found in most of the cells of eukaryotic origin. These are the key organelles that produce most of the cellular energy required for the proper functioning of the cell, also known as the “power house of the cell”. The energy production in mitochondria mainly occurs through the tricarboxylic acid (TCA) cycle and oxidative phosphorylation (OXPHOS). The electron carriers that generated in TCA cycle contribute their electrons to the electron transport chain (ETC). The OXPHOS consists of four distinct multisubunit complexes (I-IV) and two electron carriers that generate a proton gradient across the mitochondrial inner membrane, which in turn drives ATP synthase (complex V) to generate ATP. The production of ATP is based on the movement of electrons between the complexes and the transport of the protons from matrix to intermembrane space which generate a proton concentration gradient used by the ATP synthase for ATP production. Complex I and III are the centres that give rise to the reactive oxygen species (ROS) including oxygen radicals and hydrogen peroxides during ATP generation. Both complex I and III of ETC can be leaky and leaked electrons may react with the oxygen present in the mitochondrial matrix to form superoxides. Under physiological conditions these free radicals which generate as side products during ATP synthesis, can be abandoned by the available cellular antioxidants however, during pathological conditions the antioxidants level gets depleted thus these free radicals could not be abandoned and may initiate the pathological signalling mechanisms. In neurons, the glycolytic pathway is limited and the energy production is mainly dependent on mitochondria. These mitochondria are mainly present at the synapse, where the energy demand is quite high. It can move from a presynaptic region to the postsynaptic region of a neuron according to cellular demand of ATP which further reveals the inevitable role of mitochondria in energy biogenesis in neurons. Physiologically mitochondrion that produces ATP actively, lowers the proton motive force, NADH/NAD<sup>+</sup> ratio and ROS production. Conversely the ROS production at complex I is increased by the low ATP production due to impaired respiratory chain. The reduction in the ATP production is an expected complication of defective mitochondrial respiration. This has been proved in MPTP induced experimental models of PD that ATP synthesis gets depleted by twenty percent in brain and also in synaptosomal & hepatocyte preparations [3]. Simultaneously, in other article it has been argued that depletion of more than fifty percent of complex I activity cause a significant reduction of ATP production in nonsynaptic brain mitochondria. In PD patients approximately twenty to thirty percent reduction in complex I activity has reported which caused significant ATP depletion and consequent impairment of neuronal physiology [3]. However, another report showed that mutation (A53T mutation) in  $\alpha$ -synuclein in rodents also exhibit the mitochondrial dysfunction

## Protein Aggregation in Neurodegenerative Diseases

Rishabh Chaudhary<sup>1</sup>, Mujeeba Rehman<sup>1</sup>, Vipul Agarwal<sup>1</sup>, Arjun Singh Kaushik<sup>1</sup> and Vikas Mishra<sup>1,\*</sup>

<sup>1</sup> Department of Pharmaceutical Sciences, Babasaheb Bhimrao Ambedkar University, Vidya Vihar, Raebareli Road, Lucknow-226025, (U.P.), India

**Abstract:** Protein aggregation-related diseases primarily affect the central nervous system and are involved in the pathogenesis of multiple neurodegenerative diseases as well as several rare hereditary disorders that involve the deposition of protein aggregates in the brain. These diseases include Alzheimer's, Parkinson, Huntington's disease, Prion diseases, amyotrophic lateral sclerosis, familial amyloid polyneuropathy, *etc.* The aggregates usually consist of fibers containing misfolded protein with a beta-sheet conformation. As a result, proteins' secondary structures change from  $\alpha$ -helix to  $\beta$ -sheet, leading to the accumulation of harmful misfolded protein aggregates in the CNS. The misfolding, subsequent aggregation and accumulation of proteins in neurodegenerative diseases lead to cellular dysfunction, loss of synaptic connections and brain damage. This chapter discusses some of the important neurodegenerative diseases resulting from protein misfolding and explains the pathological mechanisms behind brain damage.

**Keywords:** ALS, Alzheimer, Amyloid beta, Huntington, Misfolding, Parkinson, Protein aggregation, Protein folding.

### INTRODUCTION

Proteins are one of the most predominant and essential macromolecules in living organisms. They are made up of one or more long chains of amino acids (the building blocks of proteins). Amino acids are simple organic compounds with an amine group (NH<sub>3</sub>), a carboxylic acid group (R-C(O)OH), and a variable side-chain specific to each amino acid. Every single component of our bodies, from hair to the toe nail, is made up of protein [1]. The human genome contains over 30,000 different proteins, which all contribute significantly to diverse biological activities such as catalysis, signal transmission, structural integrity, immune protection, transmission of nerve impulses, storage and transportation of nutrients,

\* **Corresponding Author Vikas Mishra:** Department of Pharmaceutical Sciences, Babasaheb Bhimrao Ambedkar University (A Central University), Vidya Vihar, Raebareli Road, Lucknow-226025, (U.P.), India; Tel: +918840889812; E-mail: vikasmishra12@gmail.com



as well as regulation of growth and differentiation processes [2]. These remarkable arrays of functions result from proteins' unique ability to fold instantaneously into precisely determined three-dimensional conformation, which establishes functional diversity among protein molecules and allows them to interact with one or more multifaceted molecules, which leads to the formation of an efficiently functioning protein with a native fold [3, 4]. Folding of protein molecules starts as soon as the proteins are synthesized at ribosomes and successively passes through post-translational modifications to attain their functional and native fold [5]. Even though some proteins fold spontaneously as soon as they are synthesized, many proteins exhibit erroneous folding and are susceptible to misfolding [6]. Protein misfolding is a term used to describe a process in which proteins fold into completely erroneous or non-native conformational states [7]. It is a common cellular event that can occur at any time during a cell's life and is triggered by a variety of factors such as somatic or genetic mutations, inaccurate transcriptional or translational mechanism, disrupted folding and molecular chaperones machinery, erroneous post-translational modifications, as well as structural alterations due to certain environmental factors *viz.* pH, temperature, oxidative stress and presence of metal ions [8, 9]. Upon protein misfolding, aberrant exposure of hydrophobic surfaces drive proteins to aggregate, which in turn impairs normal cellular activities by entrapping functional proteins, supporting a malfunctioning cascade, and influencing the aggregation propensity of other protein species [10, 11]. The process of protein aggregation occurs when folding intermediates, partially folded or unfolded structures expose their hydrophobic core that is normally hidden in the native conformation. Protein aggregation is primarily driven by hydrophobic forces, which begin with the self-assembly of smaller misfolded monomers to produce a wide variety of folding intermediates known as soluble misfolded oligomers [12]. These misfolded oligomers are referred to as "*aggregation nuclei*" or "*precursor cores*" of protein aggregation because they provide a structural framework for the reversible attachment of other misfolded proteins to the growing core and assemble to form insoluble aggregates in the form of amyloid fibrils or amorphous aggregates (protein aggregates without amyloid fibrils) [13 - 17]. The mechanism of protein aggregation is influenced by a number of factors such as high hydrophobicity range, the proclivity to form  $\beta$ -sheet-rich structures, and low net charge states [18, 19]. Therefore, protein folding and unfolding are fundamental mechanisms for initiating and suppressing certain types of cellular activities. Moreover, folding and unfolding processes are extremely necessary for activities like translocation, trafficking, secretion, immunological responses, and cell cycle regulation [20]. As a result, an inability to fold accurately or to remain correctly folded will result in the dysfunction of cellular structure and function, leading to a variety of diseases [21, 22]. Many protein aggregation-related

diseases primarily affect the central nervous system (CNS) and are involved in the pathogenesis of multiple neurodegenerative diseases (NDs) as well as several rare hereditary disorders that involve the deposition of protein aggregates in the brain [23]. Aberrant proteins that are most commonly involved in the pathophysiology of NDs include amyloid-beta ( $A\beta$ ) in Alzheimer's; neurofibrillary tau tangles in Alzheimer's, corticobasal degeneration, progressive supranuclear palsy, frontotemporal dementia, argyrophilic grain disease, and chronic traumatic encephalopathy; alpha-synuclein ( $\alpha$ -Syn) in Parkinson, multiple system atrophy, and dementia with Lewy bodies; TAR DNA-binding protein 43 (TDP-43) in amyotrophic lateral sclerosis and frontotemporal dementia; prion proteins (PrPs) in prion diseases, Creutzfeldt-Jakob disease (CJD); huntingtin (Htt) protein in Huntington's disease; and transthyretin (TTR) protein in familial amyloid polyneuropathy (Table 1) [15]. There are no evident commonalities among these disease-associated proteins in terms of expression level, size, sequence, structure, or function. Nevertheless, in diseased brain regions, all of these proteins misfold from their native states to construct intermolecular  $\beta$ -sheet-rich configuration ranging from small misfolded oligomers to large insoluble fibrillary aggregates [24, 25]. In this chapter, we addressed numerous scientific findings which indicate that a potential mechanism of neurodegeneration, involving protein misfolding and aberrant deposition of protein aggregates in neuronal cells is a prevalent cause of various neurodegenerative diseases. In addition, this section has also shed light on various neurodegenerative diseases, including Alzheimer's, Parkinson's, Huntington's, amyotrophic lateral sclerosis, and familial amyloid polyneuropathy, with an insight into their distinctive pathophysiology.

## **PROTEIN AGGREGATION IN NEURODEGENERATIVE DISEASES**

Millions of elderly populations worldwide suffer from neurodegenerative diseases, which cost millions of dollars a year to diagnose and treat. Unfortunately, the mechanisms underlying these disorders remain unclear, and no effective treatments are available. The pathogenesis of various neurodegenerative diseases, including Alzheimer's, Parkinson's, Huntington's, and amyotrophic lateral sclerosis is nearly identical. Protein misfolding disorders, proteopathies, and protein conformational abnormalities are all examples of neurodegenerative diseases. Misfolding and aggregation of certain proteins, which are specific to each condition, occur in all disorders [26]. Protein aggregation is caused by misfolding of proteins, and the accumulation of protein aggregates is thought to be the cause of such neurodegenerative diseases. Genetic and environmental variables cause conformational changes in some native proteins in the brain (for example, prion, tau,  $\beta$ -amyloid,  $\alpha$ -synuclein, and huntington). As a result, proteins' secondary structures change from  $\alpha$ -helix to  $\beta$ -sheet, leading to the

## CHAPTER 4

## Role of Reactive Oxygen Species in Neurodegenerative Diseases

Sukanya Tripathy<sup>1,2</sup>, Sanjay Singh<sup>2</sup>, Monisha Banerjee<sup>1</sup> and Anand Prakash<sup>3,\*</sup>

<sup>1</sup> *Molecular & Human Genetics Laboratory, Department of Zoology, University of Lucknow, Lucknow, India*

<sup>2</sup> *Department of Biotechnology, Babasaheb Bhimrao Ambedkar University, Lucknow, India*

<sup>3</sup> *Department of Biotechnology, Mahatma Gandhi Central University Bihar, Motihari, India*

**Abstract:** The altered redox state leads to oxidative stress through the extravagant synthesis of reactive oxygen species (ROS) and inhibition of the antioxidant system. The high oxygen demand in nervous tissue makes it vulnerable to ROS, and the presence of peroxidation-prone lipid cells worsens the situation. We now understand that oxidative stress plays a role in the pathophysiology of neurodegenerative diseases such as Parkinson's disease, Motor neuron disease, and Alzheimer's disease. In spite of the fact that there is no lasting cure for any of these diseases, antioxidant treatments have been promoted as ways to treat and discourse neurodegenerative diseases. However, the results regarding their efficacy are contradictory. This chapter examines the role played by oxidative stress in the etiology of neurodegenerative diseases and how they lead to brain dysfunction in people. It will later provide an overview of antioxidants as a therapeutic option for oxidative stress-induced damage.

**Keywords:** Alzheimer's disease, Motor neuron disease, Neurodegenerative disorders, Oxidative stress, Reactive oxygen species (ROS), Parkinson's disease.

### INTRODUCTION

In the partial oxidation of oxygen, reactive oxygen species (ROS) are produced, along with electrons coupled to outer shell orbits. These species generate free radicals by producing oxygen and generating free radicals. ROS originates from a variety of sources in the body, including endogenous and exogenous sources. The mitochondrial pathway consists of several mechanisms, including complexes of cytochrome P450 metabolism and inflammatory cascades. However, the xenobiotic pathway is a result of ionizing radiation, heavy metals, and smoking cigarettes [1, 2]. Oxidative stress is believed to be caused by a mismatch between

\* **Corresponding author Anand Prakash:** Department of Biotechnology, Mahatma Gandhi Central University Bihar, Motihari, India; E-mail: anandprakash@mgcub.com

the cellular antioxidant defense system and the generation of ROS. This entails an increase in the generation of waste as well as a decrease in the removal of waste. Unlike other molecules, ROS have increased reactivity in human cells and can react more quickly to similar and different molecules. Studies have shown that oxidative stress also modulates the cell cycle through the interaction of ROS with organic molecules [3]. Reactive oxygen species have been shown to contribute to apoptosis, oncogene expression, and cell signaling [4].

Neurodegenerative diseases are considered to be a complicated sum of disorders that show the feature of liberal expirations of neurons [5, 6]. However, the pathogenesis of neurodegenerative diseases has not yet been fully explored. However, enhanced oxidative stress has been suggested as one of the common etiologies associated with some neurodegenerative diseases. The result of oxidative stress is cellular impairment, DNA damage due to a dysfunctional repair system [7], and mitochondrial dysfunction. These symptoms collectively promote the process of aging thus accelerating the development of neurological disorders [8, 9]. Due to these hazardous symptoms of ROS, continuous efforts are being made for agents that protect against oxidative damage so that neurodegenerative diseases can be cured. As the focus of this chapter is on oxidative stress in the pathogenesis of neurodegenerative diseases, especially in motor neuron disease, Alzheimer's disease (AD), and Parkinson's disease (PD), oxidative stress is elaborated.

### **WHAT ARE REACTIVE OXYGEN SPECIES?**

*“Activating oxygen can produce compounds called radicals that put oxidative stress on cells. Such stress could ultimately lead to cancer and other diseases.”*

*John Simon*

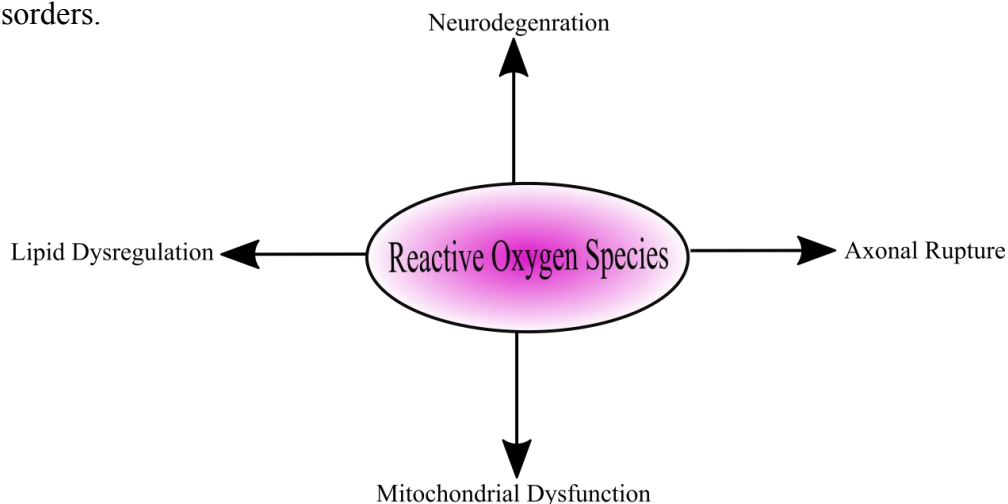
Reactive oxygen species form due to enzymatic reactions that involve NADPH oxidases, cyclooxygenase (COX), uncoupled endothelial nitric oxide synthase [eNOS], lipoxygenase, cytochrome P450 enzymes, and arachidonic acid and xanthine oxidases [10]. The mitochondria are the main source of ROS production. All three mitochondrial complexes - complex I, II, and III - release electrons that react with molecular oxygen and produce ROS. The superoxide dismutase 1 (SOD1) catalyzes the conversion of oxygen generated in the cytosol to H<sub>2</sub>O<sub>2</sub> in the cytosol and mitochondrial intermembrane space [11, 12]. When Fe<sup>2+</sup> and Cu<sup>+</sup> are reduced, OH is formed, causing oxidative stress-induced cell damage, which results in genome instability [13]. There are no specific types of cells that produce ROS; they are produced by all types of cells. Messages are transmitted intracellularly and intracellularly by them. Cellular response to ROS damage is influenced by signal context, stimulus intensity, stimulus duration, and stimulus

duration. ROS have been found to interfere with the signal transmission in the immune system, apoptosis, metabolism, aging, and hypoxia through alteration of morphology of signaling proteins through phosphorylation [14].

Additionally, ROS has been shown to enhance the signaling mediated by EGF and platelet-derived growth factors (PDGF), in which tyrosine kinase activity is enhanced by activating downstream signaling pathways such as PI3K-AKT and MAP kinase [15]. The increased level of ROS in cells leads to the following outcomes:

1. Oxidative stress
2. DNA and cell damage
3. Based on the severity of exposure it may also promote cell survival
4. Apoptosis

DNA is highly susceptible to mutagens, and ROS is known for its ability to induce stress through single-strand and double-strand breaks, point mutations, frameshift mutations, and DNA cross-links. Genome instability could result from apoptosis, replication errors, and apoptosis. Major ROS mutations include guanine alteration, resulting in G → T transversions [16]. The effects of ROS can be observed not just on DNA and apoptosis, but also on cancer initiation and progression [17], especially if the mutation involves oncogenes or tumor suppressor genes. Fig. (1) summarizes the effects of ROS on neurodegenerative disorders.



**Fig. (1).** Schematic representation of effects of ROS in neurodegenerative diseases.

**CHAPTER 5****Parkinson Disease: Molecular Biology, Pathophysiology and Biomarkers****Sarfraj Ahmad Siddiqui<sup>1</sup>, Habiba<sup>1</sup> and Md Arshad<sup>2,\*</sup>**<sup>1</sup> *Department of Zoology, University of Lucknow, Lucknow, India*<sup>2</sup> *Department of Zoology, Aligarh Muslim University, Aligarh, India*

**Abstract:** Parkinson disease is a progressive neurodegenerative disorder that affects motor control of the body. The disorder is associated with the loss of neurons due to formation of protein aggregates that leads to the development of apoptosis and degeneration of the neurons. The disease progresses slowly, making it difficult to identify it at early stage. But the availability of potential therapeutic biomarkers in analysis and early identification of PD is of great importance. The current review discusses here the molecular biology, pathophysiology and availability of potential biomarkers associated with the PD condition.

**Keywords:** Parkinson disease, Alpha synuclein, neurodegenerative disorders, motor control, Dopamine.

**INTRODUCTION**

Parkinson's disease (PD), a neurodegenerative disorder of the central nervous system, affects motor control of the body [1]. The system most commonly affected in PD is dopaminergic neurons especially in substantia nigra and striatum [1, 2]. The dopaminergic system includes the dopamine neurotransmitter and the dopaminergic neurons, functioning to regulate motor activity, motivation as well as other related cognitive functions [3]. The disease is most commonly unidentifiable at an early stage as the symptoms appear at higher stages of the diseases [3]. So, there is a great requirement of a potential therapeutic biomarker for early detection and identification of the disease.

There are different types of PD biomarkers such as genetic biomarkers, biochemical biomarkers, clinical as well as imaging biomarkers. Most common PD biomarkers include dopamine and its related metabolites, amino acids,  $\alpha$ -synuclein, proteomic biomarkers, *etc* [4, 5].

---

\* **Corresponding author Md Arshad:** Department of Zoology, Aligarh Muslim University, Aligarh, India; E-mail: arshadm123@rediffmail.com

Moreover, recent studies have incorporated new micro-RNA based biomarkers as well as metabolic biomarkers from the biofluids [6]. The current chapter discusses here some of these available biomarkers for the identification of PD.

### **Parkinson's Disease (PD)**

PD is a progressive long term neurodegenerative disorder that affects central nervous system and leads to continuous loss of dopamine (DA) neurons [3]. The loss of dopamine neuron is prominent in Substantia Nigra (SN) of the basal ganglia in midbrain and thus affects motor functions of the body [1]. Basal ganglia is involved in the regulation of motor function and in PD the loss of neuron cause aberration in movement, muscular rigidity, difficulty in walking and resting tremor [7, 8]. The disease affects almost 1% population worldwide which covers old age person with the age of 60 years or more [9, 10]. As the disease worsens, the non-motor functions are also affected in PD [8]. Later stage of the disease affects cognitive functions that develops in apathy, anxiety, stress as well as depressive disorders and dementia in people [7, 8]. The degeneration of the neuron is associated with the formation of Lewy bodies due to misfolding of proteins in neurons [11]. The aggregated misfolded protein causes neurodegeneration and ultimately the death of neurons [11, 12].

Although the main cause of the PD is not clearly known but the role of genetic and environmental factors has equal importance. Similarly, other risk factors include exposure to some pesticides as well as prior head injury. However, people with the habit of smoking tobacco and utilization of coffee and tea are known to have very low risk factor.

### **GENETIC AND MOLECULAR BASIS OF PD**

#### **Genetic and Epigenetic Factors of PD**

The probability of PD with its genetic association is almost 15% of the PD patients, which shows its family history [12]. It has both an autosomal dominant and recessive types genetic association of the disease [12]. The studies have so far confirmed mutations in different genes associated with the PD including genetic polymorphisms [12]. Some of these genes includes  $\alpha$ -synuclein, Parkin, DJ-1, VPS35, LRRK2, GBA1 and PINK1 whose mutation is found to be associated with the PD condition [13].

Altogether, the epigenetic factor also plays an important role with the pathophysiology of PD. The term epigenetic refers to the alterations in chromatin structure through histone and/ or DNA modification in such a way that does not cause any change in DNA sequence [14]. These epigenetic modification affects

the gene expression profile that results in altered cellular and molecular functions [14]. Such modifications are heritable and are also affected by the different environmental factors as commonly observed in sporadic PD condition [15]. The most common effect of environmental factors on such modification is observed in  $\alpha$ -syn gene (SNCA) where methylation of CpG-2 island prevents the binding of the TFs to SNCA and subsequently inhibits the overexpression of  $\alpha$ -syn [16].

### Environmental Factors of PD

Different environmental factors also cause PD conditions which includes mainly toxins such as heavy metals. Heavy metals exposure causes dopaminergic neurons death in substantia nigra which further develops into PD [17]. These heavy metal exposure to neuronal cell causes higher level of oxidative stress inside cell [17]. The accumulation of heavy metal when present inside dopaminergic neurons increases the probability for PD [18]. The study has confirmed that the *in vitro* oxidation of dopamine in the presence of monoamine oxidase and oxygen generates 3,4-dihydroxylphenylacetaldehyde (DOPAL), which is very much involved in formation of oligomerisation of  $\alpha$ -syn [19]. Moreover, monoamine oxidase inhibition results in an decreased DOPAL formation and further decreased oligomerization of  $\alpha$ -syn in these neurons [19]. Similarly, dopamine autooxidation forms dourmine quinone (DAQ), which has the capacity to the formation of non-fibrillar  $\alpha$ -syn oligomers and its further transmission to nearby neuronal cells [16].

The accumulation of cytosolic dopamine in dopaminergic neurons is prevented by the expression of neuromelanin pigment which is highly expressed in these neurons [20]. Thus, it prevents the formation of oxidative stress inside neurons. However, decaying neurons release neuromelanin pigment in extracellular fluid which activates neuroglia and in turn promotes neuroinflammation in nearby neurons [20]. In spite of this when this neuromelanin is associated with the lipid promotes the aggregation of  $\alpha$ -syn into insoluble forms that leads to the progression of PD [20, 21]. Furthermore, genetic polymorphism in cytochrome P450 2D6 (CYP2D6) enzyme affects the metabolism of toxins, thus they are associated with the progression of PD [22]. The rodent study with CYP2D6 deficient animals exhibited higher level of oxidative stress and progression of PD when exposed to the pesticides (*e.g.*, organophosphates, atrazine) [22].

### Molecular Mechanism of PD

Different cellular and molecular processes are involved in the progression of PD. The pathophysiology of the PD is mainly based on the fact that the neurodegenerative condition in dopaminergic neuron that causes impaired brain functions. Although there are different proposed mechanism for the PD



## Alzheimer's Disease: Molecular Biology, Pathophysiology and Biomarkers

Yoganchal Mishra<sup>1</sup>, Sarika Singh<sup>2</sup> and Neelam Yadav<sup>1,\*</sup>

<sup>1</sup> Department of Biochemistry, Dr. Rammanohar Lohia Avadh University, Ayodhya-224001, India

<sup>2</sup> Neurosciences and Ageing Biology and Toxicology and Experimental Medicine Division, CSIR-Central Drug Research Institute, Lucknow-226031, India

**Abstract:** Alzheimer's disease (AD) is a progressive neurodegenerative disorder of the central nervous system and the leading cause of dementia in elder people. The clinical symptoms of AD are memory loss and cognitive dysfunction. Pathologically, AD is characterized by the deposition of  $\beta$ -amyloid plaques and neurofibrillary tangles of hyperphosphorylated tau protein in the brain and neurodegeneration. However, the cause of AD is not known. Various genetic and non genetic factors have been involved in the pathogenesis. The main genetic risk factor of AD is E4 allele of apolipoprotein E. Currently; no effective treatment is available for AD. Only two classes of drugs namely acetylcholinesterase inhibitor (Galantamine, Rivastigmine, Donepezil), and N-methyl-D-aspartate receptor antagonist (Memantine) are available for AD treatment. These drugs have limited effectiveness and disagreeable side-effects in AD patients. This chapter focuses on the molecular biology, pathophysiology of the disease and various diagnostic and prognostic biomarkers for the management of AD.

**Keywords:** Acetylcholinesterase inhibitors, Alzheimer's disease, Biomarkers,  $\beta$ -amyloid, Neurofibrillary tangles, Neurodegenerative.

### INTRODUCTION

Alzheimer's disease (AD) is a chronic neurodegenerative disease and the leading cause of memory loss in older people. Recent reports from World Health Organization (2020) and World Alzheimer's Disease (2018) show that 50 million people have dementia worldwide and now it has speedily become an epidemic, with the number of cases predicted to be 152 million by 2050 [1, 2]. AD is characterized by three phases of symptoms. The first phase of symptoms is cognitive dysfunction which includes memory loss, executive dysfunction (*i.e.* loss of intellectual coordination skills and higher level planning) and language difficulties.

\* **Corresponding author Neelam Yadav:** Department of Biochemistry, Dr. Rammanohar Lohia Avadh University, Ayodhya-224001, India; Tel:+91 9453731722; E-mail: neelam2k4@gmail.com

The second phase of symptom includes psychiatric and behavioral disturbances (depression, delusions, hallucinations and agitation) conjointly known as non-cognitive symptoms [3]. Third phase symptoms include difficulties with performing daily activities of life. Alzheimer's disease symptoms progress from mild memory loss to severe dementia.

The exact molecular-mechanism of AD is still not known. Clinically, AD has many neuropathological indications, including the deposition of  $\beta$ -amyloid ( $A\beta$ ) peptides in the extracellular matrix between neurons (known as senile plaques) [4, 5] the intracellular formation of neurofibrillary tangles (NFTs) arising from the accumulation of hyperphosphorylated tau protein in neurons, neuroinflammation, neuronal loss and oxidative stress [6].

The cerebrospinal fluid (CSF) and positron emission tomography (PET) biomarkers along with some new clinical methods can help diagnose alive AD patients, however, initially, it was confirmed after death by post-mortem autopsy [7]. There is no cure for AD. The main treatment option for patients is to reduce the level of  $A\beta$  to stop or retard the progression of pathology of AD. Currently, one combined drug therapy (memantine plus donepezil), memantine (N-methyl-D-aspartate receptor antagonist) alone and three drugs galantamine, rivastigmine, donepezil (different cholinesterase inhibitors) are available for clinical applications [8]. These drugs have limited treatment possibilities and unpleasant side-effects in AD patients. Recently, multi targeted directed ligands (MTDL) are widely used for the treatment of AD. These drugs have additional biological properties along with cholinesterase inhibition [9, 10]. Drugs having disease modifying characteristics and neuroprotective behavior properties are of greater interest for research. This chapter highlights the molecular mechanisms, pathophysiology of the disease and various diagnostic and prognostic biomarkers for the management of AD.

### **Risk Factors for AD**

Many research studies have reported that increased age, hypertension, increased cholesterol levels, genetics, Down syndrome, smoking and alcohol use, lifestyle-associated problems such as obesity, Type-2 diabetes mellitus, coronary artery disease, and mild cognitive impairment contribute to an increased risk of AD [11]. The symptoms of AD at different progressive stages are shown in Table 1.

Table 1. Symptoms at different progressive stages of Alzheimer disease.

Stage	Mild	Moderate	Severe
Symptoms	Memory loss (Dementia) Unexplained mood swings Language problems Personality changes Poor or decreased judgment Loss of initiative	Unable to learn/recall new information Disorientation to time and place Behavioral changes Disturbances in short-term memory Confusion, wandering, aggression, agitation Require assistance activities of daily living	Motor disturbances, Gait incontinence Problem with attention and spatial orientation Bedridden Unable to perform activities of daily living Long-term care needed

### Molecular Genetics of AD Pathogenesis

Several studies have shown that two distinct misfolded proteins accumulate in the brain of AD patients. The first is  $\beta$ -amyloid ( $A\beta$ ), which is a proteolytic cleavage product of amyloid precursor protein (APP) by  $\beta$ - and  $\gamma$ -secretases. One of the pathological characteristics of AD is the accumulation of  $A\beta$  into plaques and smaller oligomers [12]. An early-onset autosomal dominant genetic disease is known as Familial autosomal dominant (FAD). Three very familiar genes (*APP*, *PSEN-1*, and *PSEN-2*) are related to the FAD [13]. Many reports have confirmed that mutations in APP are correlated with hereditary FAD. In 2% of AD cases, the age of onset of FAD is less than 65 years [14]. Several clinical trials have been attempted for the reduction of  $A\beta$  production or clearance of  $A\beta$  through antibody therapies or small-molecule by direct or indirect targeting of this pathway [12, 15]. In AD, the second misfolded protein is tau which aggregates in cells in the form of neurofibrillary tangles (NFT). It is a microtubule-associated protein. The most common pathological feature in AD patients is cognitive decline [16, 17]. However, the majority of AD cases (> 98%) are sporadic, which do not involve mutations in the processing pathways of APP and the age of onset is more than 65 years [12]. In these AD patients, main risk factor is apolipoprotein (APO) E4 (genetic factors) along with age [12].

### Pathophysiology of AD

In AD patients, neuronal loss may be observed in the brain, mainly in the hippocampus, entorhinal cortex, amygdala and the cortical related areas and different cortices regions (frontal, temporal and parietal). Some pathological changes are also seen with cholinergic basal nucleus and the subcortical nuclei (*i.e.* serotonergic dorsal raphe, noradrenergic locus coeruleus). In addition, in the entorhinal and trans-entorhinal cortex, hippocampus (CA1 region) and the cortical

# Huntington's Disease: Molecular Basis, Pathophysiology and Biomarker

Sarfraj Ahmad Siddiqui<sup>1\*</sup> and Anand Prakash<sup>2</sup>

<sup>1</sup> Department of Zoology, University of Lucknow, Lucknow, India

<sup>2</sup> Department of Biotechnology, Mahatma Gandhi Central University, Bihar, India

**Abstract:** Huntington's disease (HD), a hereditary autosomal dominant neurodegenerative disorder is characterised by weak cognitive and motor functions. The symptoms most commonly prevail among 30-50 years age group people. The coordination and movement abilities gradually worsen, and mental abilities mostly decline that progress towards dementia. The basis behind the HD disease is neuronal death due to mutations in huntingtin (HTT) protein, a protein required for the development and survival of neurons. There is an increase in the number of CAG repeats that generally code for glutamine within the HTT gene, resulting in an expansion of polyglutamine chain in HTT protein. This mutated HTT protein is toxic causing neuronal death and motor dysfunction. There is no known therapy for this disease other than suggestive relief treatment approaches. The review will be discussing here the molecular mechanism, pathophysiology and the potential biomarkers associated with HD.

**Keywords:** CAG, HD, HTT, Huntingtin disease, Motor disorders.

## INTRODUCTION

Huntington disease is a progressive neurodegenerative disorder that causes impaired cognitive and motor function. It is an autosomal dominant type genetic disorder that passes from one generation to the next. The progression of the disease generally starts 15-20 years before the appearance of HD symptoms and the common age group being targeted by the disease is 30-50 years [1]. The prevalence of HD is almost 5–10 cases per 100,000 people worldwide irrespective to the race and ethnic group [2]. Till date, no clinically available therapeutic method is available that can specifically prevent HD. However, current strategies

---

\* Corresponding author Sarfraj Ahmad Siddiqui: Department of Zoology, University of Lucknow, Lucknow, India; E-mail: sarfrajcbt@gmail.com

brain atrophy within striatum and cortical region that affects the diverse types of motor and cognitive functions [3]. In the severe stage of the disease, other brain regions are also affected by the disease.

The main molecular mechanism behind the progression of the disease is a mutation in HTT (Huntingtin) gene that forms a mutated protein mutHTT [4]. This mutated protein contains an increased number of CAG repeats ( $\geq 40$ ), which forms a poly glutamate chain. Generally, in normal HTT protein, it contains only up to 20 repeats [5]. This mutHTT protein forms aggregate inside neurons and affects different neuronal functions including axonal transport. Altogether, this protein interacts with other proteins and alters their function. The modified functions in these neurons result in different types of anomalies that ultimately cause neuronal death (approximately 88% striatal neurons in HD patients) [6].

Generally, the disease progresses almost 15-20 years before the appearance of clinical symptoms of HD. Due to this, early detection of HD is almost impossible unless the family history of the disease is not known [7]. The studies are going on to find out a precise biomarker for mainly focus on delaying the progression of the disease. The HD patients contain early diagnosis of HD using different biological techniques. The current chapter reviews the involvement of potential biomarkers for diagnosis and early detection of HD.

### **Huntingtin Disease**

Huntington's disease (HD) is a progressive neurodegenerative disorder characterised by impaired motor, psychiatric and cognitive functions. It is an autosomal dominant genetic disorder that passes from one generation to another having a mutation in the huntingtin (HTT) protein located on small arm of chromosome number 4 [8]. Disease progression is generally between 30-50 years of age group with a frequency of almost 5-10 among 100,000 people worldwide [2]. The Juvenile HD which generally occurs before the age of 20 (almost 8% of all HD cases) generally exhibits the symptoms of Parkinson's disease with slow body movement [9, 10]. Major psychiatric and cognitive symptoms associated with the HD include suicide tendency, affective disorders, obsession, apathy, attention deficit, schizophrenia-like symptoms, lack of motor skills, impaired sleep cycle and weight loss. The basal ganglia are one of the most important brain regions affected by this neurodegeneration HD condition and result in increased movement disorder commonly known as chorea disorder [10]. With the passage of time the disease progresses and worsens the condition that the person faces dementia and difficulty in talking. The person with HD may further develop cognitive disfunctions such as anxiety, depression, mood swing, anger *etc.*

Other secondary diseases such as pneumonia, heart failure worsen the diseases condition with utmost probability that leads to the death of the person [10].

The mutant huntingtin protein causes neurodegeneration in the nervous system [5]. Currently, there is no therapeutic availability for HD but a few drugs such as tetrabenazine can be used for controlling movement and other difficulties.

### **Genetic and Molecular Basis of Huntingtin Disease**

The gene for huntingtin disease was first discovered in 1993. It is present in all persons with two copies on the homologous chromosome. The person with mutation in either copy of the homologous huntingtin gene develops HD. It is an autosomal dominant disorder which means a person with single mutated copy of the gene will have HD and the probability of a child having HD is almost 75% if both of their parents are carriers of the defective gene [5]. It is also independent of the sex of the individual and does not skip from one generation to the next generation. Generally, the huntingtin gene contains up to 20 repeats of trinucleotide CAG (CAGCAGCAGCAGCAG) but in mutated huntingtin gene of HD condition, the repeat extends more than 40 (CAG expansion) that causes a mutated protein (mHTT) formation and ultimately the neurodegeneration [11]. The extended CAG repeats cause misfolding of protein and it forms clumps within neurons leading to neuronal death [11]. The mutated huntingtin protein (mHTT) does not affect all brain parts equally as all neurons contain these mutated gene do not depend on this protein for their function. Moreover, the internal environment of neurons with this mutation and the effect of other interacting factors also governs the pathological condition. The most important brain part damaged in HD condition is the striatum, which is involved in vital functional and behavioural aspects of our brain such as movement and coordination, learning and memory, mood control, *etc* [12]. The huntingtin protein has an important function in neurodevelopmental stages. In mutated conditions, the huntingtin protein activates a number of cellular processes such as apoptosis, caspase activation, excitotoxicity, mitochondrial dysfunction, neuronal membrane damage, impaired axonal transportation *etc.* that ultimately leads to neuronal death [12] (Fig. 1).

The trinucleotide repeats in huntingtin gene are not constant between all individual and in different generations. The trinucleotide repeats CAG code for the amino acid glutamine and by this mutation, it produces a mutated protein with an extended polyglutamate chain or polyglutamine tract (polyQ tract) and the part of the gene with this repeat is known as *polyQ* region [13] (Fig. 2).

**CHAPTER 8****Multiple Sclerosis: Molecular Biology, Pathophysiology and Biomarkers****Sanjay Singh<sup>1,\*</sup>, Sukanya Tripathy<sup>1</sup> and Anand Prakash<sup>2,\*</sup>**<sup>1</sup> *Department of Biotechnology, Babasaheb Bhimrao Ambedkar University, Lucknow, India*<sup>2</sup> *Department of Biotechnology, Mahatma Gandhi Central University Bihar, Motihari, India*

**Abstract:** In the brain, multiple sclerosis is a chronic disease caused by immune-mediated neurodegeneration. About 2.5 million people around the world suffer from multiple sclerosis (MS), and women are more prone to it. Neither clinical nor imaging biomarkers are used to diagnose or characterize the disease. Molecular biomarkers have been developed from immunology and neurobiology because they are well matched with causal path mechanisms and other disease characteristics, thus, limiting the number of molecular biomarkers used in clinical practice. Currently, the chapter discusses the attribute of flawless MS biomarkers and the challenges associated with developing newer biomarkers. The study also discusses the discovery of biomarkers from the blood and cerebrospinal fluid (CSF) that are useful for diagnosing MS, predicting its prognosis, and evaluating its therapeutic response and side effects.

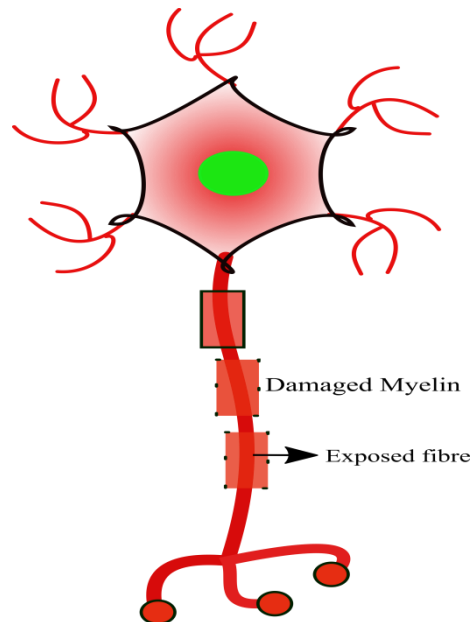
**Keywords:** Axonal injury, Biomarkers of MS, Molecular aspects, Multiple sclerosis (MS), Neuronal inflammation, Neuropathology of MS.

**INTRODUCTION**

Multiple sclerosis (MS) is an inflammatory, chronic disease of the central nervous system (Brain and Spinal cord). Neurons are composed of axons, soma (cell body), dendrites, and presynaptic terminals. A myelin sheath surrounds the axonal region of neurons. The myelin sheath plays an imperative role in the propagation of action potentials. MS occurs when the myelin sheath is attacked by the self-immune system (Fig. 1), leading to the demyelination of neurons that results in communication problems between the brain and the rest of the body.

---

\* **Corresponding author Anand Prakash:** Department of Biotechnology, Mahatma Gandhi Central University Bihar, Motihari, India; E-mail: anandprakash@mgcub.ac.in



**Fig. (1).** Represents the structure of a single neuron undergoing Multiple sclerosis. The axon fibre is demyelinated and thus hampering the communication between two neurons.

MS patients experience a wide range of symptoms. Despite this, fatigue and difficulty in walking are two of the most common symptoms of MS. Changes in the ability of daily routine performance and work done to lead to fatigue whereas walking difficulty may result from numbness in legs, difficulty balancing, weakness of muscles, muscle spasticity, vision problems, *etc.* Smoking is also a reason for the increased risk of multiple sclerosis development. Four types of multiple sclerosis on the basis clinical pattern have been recognised -

1. Relapsing-remitting multiple sclerosis (RRMS)
2. Primary-progressive multiple sclerosis (PPMS)
3. Secondary-progressive multiple sclerosis (SPMS)
4. Clinically isolated syndrome (CIS)

Among all of them, the most common type of MS is RRMS.

### **Relapsing-remitting Multiple Sclerosis (RRMS)**

About 85% of patients with MS suffer from the RRMS. It involves the episodes of new or increasing symptoms, it is followed by periods of remission, during which symptoms can go away partially or totally.



**Primary-progressive Multiple Sclerosis (PPMS)**

There is no relapse or remission of episodes and the symptoms become worse progressively. It occurs in about 15% of people with MS.

**Secondary-progressive Multiple Sclerosis (SPMS)**

Initially, patients experience relapsing and remission episodes followed by the steady progressiveness of the disease.

**Clinically Isolated Syndrome (CIS)**

It is the first episode of MS that lasts about 24 hours. Another occurrence of the episode leads to the RRMS.

**MOLECULAR ASPECT OF DISEASE**

Till date, no specific test is developed for the diagnosis of MS [1]. The only possible method for diagnosis of the disease is based on symptoms developed by lesion studies. Lesions were created in different regions and different time points. The lesions are categorized as:

1. In the white matter of the CNS (the space dissemination criterion);
2. at least two distinct episodes in the disease course (the time dissemination criterion);
3. chronic inflammation of the CNS, as determined by analysis of the CSF (the inflammatory criterion).

The presence of any of these measures allows a general diagnosis of MS, which may be used according to the time course of the disease. An international board on the diagnosis of MS inferred that the time of diffusion criterion should be confirmed by clinical signs on MRI at least 3 months follow up or on a previous MRI.

To deduce an inference of MS, the physician must confirm the following given symptoms and biomarkers:

- discover evidence of injury in at least two discrete areas of the CNS that including the brain, spinal cord, and optic nerves.
- determine that the damaged areas developed at least 1 month apart.
- exclude all other possible diagnoses.
- observe that the symptoms remain present for more than 24 hours and occur as different episodes separated by 1 month or more.

**CHAPTER 9****Molecular Diagnostics and Immunological Markers of Neurodegenerative Disorders****Subhadip Chakraborty<sup>1,\*</sup>**<sup>1</sup> *Department of Botany, Nabadwip Vidyasagar College, Nadia, West Bengal, India*

**Abstract:** Neurodegeneration is a progressive process that occurs with normal aging with accelerated loss of normal functioning and structure of neurons. The physiological aging of neurons can be expedited by many different factors like neurodegenerative diseases (NDs) including frontotemporal lobe degeneration (FTLD), Alzheimer's disease (AD), dementia with Lewy bodies (DLB), vascular dementia (VaD), *etc.* In the clinical view, the symptoms of different types of neurological disorders have a high degree of similarity, making it difficult for differential diagnosis. Clinicians need strong expertise to reach a correct diagnosis for a particular disease as there are so many established clinical guidelines for the diagnosis of different types of neurological disorders. Here, in this chapter, we shall focus to understand the different molecular diagnostic tools and immunological markers used for the detection of neurodegenerative disorders.

**Keywords:** Alzheimer's disease, BSE (Bovine spongiform encephalopathy), CJD (Creutzfeldt–Jakob disease), CSF (Cerebro Spinal Fluid), CWD (Chronic wasting disease), Dementia with Lewy bodies, FFI (Fatal familial insomnia), Frontotemporal lobe degeneration, GSS (Gerstmann– Straußler–Scheinker syndrome), Immunology, Marker, Molecular diagnostics, Mutation, Neurodegeneration, Neurodegenerative diseases, PrPSc protein, Transmissible Spongiform Encephalopathies, Scrapie, Vascular dementia, vCJD (variant Creutzfeldt–Jakob disease).

**INTRODUCTION**

Diagnostic tools are the critically and crucially important axis of our healthcare system. At present, the diagnostic results are the main axis to making a medical decision correctly. As for example, the high throughput genetic tests can be helpful in the arrangement of personalized cancer treatment or the customized microbial culture for the expression of targeted antibiotic combating a particular

---

\* **Corresponding author Subhadip Chakraborty:** Nabadwip Vidyasagar College, Dist. Nadia, West Bengal, India; E-mail: subhadipiicb@gmail.com

infection. Right diagnosis with proper diagnostics can provide detailed information at every stage of patient care, prevention, treatment and ultimately successful management of disease and health condition. Early detection and diagnosis could limit the progression of several neurodegenerative diseases. However, clinical diagnosis and management have been an intimidating challenge as the atypical complex nature and manifestations of these diseases. Among many, the main categories of diagnostics are molecular diagnostics, hematology, immunology, clinical chemistry, microbiology and many more [1]. Molecular diagnostics has dramatically transformed the diagnostic systems to such a great extent that leads to insights into research and treatment of various types of diseases with revolutionized health care.

In recent years, molecular diagnostics for neurodegenerative disorders have gained a particular recognition following the core of the disease pathogenesis which brings a successful diagnosis and treatment [1, 2]. Similarly, biomarkers are considered very important indicators of many normal and abnormal biological processes. Any pathological changes in genetics and biochemistries can give us comprehensive information regarding the nature of any kind of disease. Reliability, and precision are very much needed for choosing a good biomarker and it should have the capacity to distinguish between normal and particular diseases. It is proved that biomarkers have great potential in validating the chances of having a particular disease prior to its phenotypic expression (early diagnosis) and setting gold standards for the development of new ways for treatment [3, 4]. Normally, the growth of the tumour by the immune system is triggered by an antibody response against the neuronal antigens expressed by the neoplasm [5, 6]. This unfortunate assault due to the improper expression of immunological factors results in a rapid precipitation of a variety of neurological deficits and consequences [7 - 9]. Every level of the potentially damaged neurons is being technically considered as irreversible as the neurons lack the regenerative capacity. It is evident that neurodegenerative illnesses could be defined depending on the condition of their molecular characteristics before some particular symptoms significantly occur in later stages of the disease. Hence in this chapter, a rigorous effort has been made to understand the different molecular diagnostic tools and immunological markers used for the early detection of neurodegenerative disorders will be emphasized.

### **What is Molecular Diagnostics?**

Laboratory medicine in developing countries ultimately depends on a collection of analytical tools commonly known as “Molecular Diagnostics.” Although the term is undoubtedly familiar to many readers, the relatively new field and its continuous evolution leave many clinicians to make them uncertain of what some

molecular laboratory methods may be, their applications, underlying science, weaknesses, strengths, and most importantly—their utilities [10]. What are the uses of molecular diagnostics? Why is it used for?

Molecular diagnostics, the term is widely referred to as the detection of mutated or aberrant genetic/genomic variants, targeting to ease of sub-classification, diagnosis, detection, prognosis and monitoring response to therapy. All these factors contribute to the fine identification and characterization of the sporadic/complex basis of the any kind disease which is crucial for the accurate provision of diagnosis. Molecular diagnostics may be considered as a high-throughput tool with a fruitful interplay among laboratory medicine, genomics knowledge and technologies in the molecular genetics regime, especially with significant discoveries in the molecular genomic technologies field [11, 12]. Genome-wide association studies (GWAS) or next-generation sequencing are such a sophisticated methods that provide invaluable detailed insights into the progression of genetic diseases, and molecular biomarkers allow physicians to estimate the disease predisposition, design and establish accurate diagnostic methods and make customized options for therapy. Molecular diagnostics are increasingly used to guide patient management from diagnosis to treatment, mainly in the fields of neurological disorders, infectious diseases, cancer, congenital abnormalities and many more. Maintenance of good laboratory practices and regulatory adherence is crucial to the success of clinical genomics which can be challenging in the face of rapid growth, emerging technologies, and an evolving regulatory landscape. The rapid expansion of molecular techniques is due to the continuous increased high demand for genetic and genomic information for a particular disease or disorder [13].

### **Molecular Diagnostics of Neurological Disorders and Diseases**

Degenerative diseases of the nervous system impose huge medical and public health burdens on populations throughout the world. Neurological disorders may be defined as diseases that affect the brain, spine, and the nerves connecting to both of them. These disorders sometimes correspond to the disorders of brain nerves that are characterized by the gradual loss of neurons. Any kind of pathological changes in the neurons may cause malfunctioning and eventually result in the death of the neurons. There are no chances of rejuvenation as the neurons can not regenerate on their own after the neural deterioration or severe damage. Such disorders strike at the body's central and peripheral nervous system leading to many symptoms such as dementia, Alzheimer's disease, epilepsy and cerebrovascular diseases such as stroke, migraine, Parkinson's disease, multiple sclerosis and many more.

# Omics for Biomarker Investigation in Neurodegenerative Diseases

Aiman Tanveer<sup>1,\*</sup> and Dinesh Yadav<sup>1</sup>

<sup>1</sup> Department of Biotechnology, DDU Gorakhpur University, Gorakhpur, India

**Abstract:** Neurodegenerative disease such as Alzheimer's disease, Parkinson's disease, Huntington's disease, amyotrophic lateral sclerosis, frontotemporal dementia, and the spinocerebellar ataxias is major health threat specifically in the elderly population. Currently, the disease diagnosis and progression is tracked through the clinical estimation which only gives a rough estimate of the disease severity. So the biomarkers serve as an essential tool in the disease diagnosis and disease progression. High-throughput omics-based technologies have facilitated the discovery of new biomarkers. The analytic methods underlying the basic omics-based technologies, genomics, transcriptomics, and metabolomics are now been extensively useful in the identification of novel biomarkers. These new candidate biomarkers are helpful in the clinical management of neurological disorders.

**Keywords:** Genomics, Metabolomics, Neurodegenerative disease, Omics, Proteomics, Transcriptomics.

## INTRODUCTION

Neurodegenerative disease is one of the major challenges affecting human health across the globe. It is an age-dependent disorder primarily affecting the elderly population, which has substantially increased in recent years [1]. The fact that this disorder is incurable is the main source of concern. It happens due to progressive degeneration and the death of the nerve cells. World Health Organization, the World Bank, and the Harvard School of Public Health (the Global Burden of Disease Study) in a collaborative study have revealed neurodegenerative disease to be a major public health issue and predicted it to be a major factor of concern for human health after cancer in 2050. These predictions are alarming and may pose serious health concerns, especially for the aging population. Some of the

\* Corresponding Author Aiman Tanveer: Department of Biotechnology, DDU Gorakhpur University, Gorakhpur, India; Tel: +918840889812; E-mail: aimandri@gmail.com

commonly occurring neurodegenerative diseases are Alzheimer's disease, Parkinson's disease, Huntington's disease, amyotrophic lateral sclerosis, frontotemporal dementia, and the spinocerebellar ataxias.

Unlike most diseases, no clear diagnostic test is available that can detect the occurrence of neurodegenerative disease. Currently, only symptom-based screening is performed through specific neuroimaging which is considered to be time taking process often taking years for accurate prediction except in the case of genetic neuro disorders. The pathophysiology of most of genetic disorders is still unexplained. The potential mechanisms associated with the neurodegenerative disorders include protein aggregation, an anomaly in gene expression and transcription regulation, mitochondrial dysfunction *etc.*

## **BIOMARKERS IN NEURODEGENERATIVE DISEASE**

An effective strategy is needed to design tools for the detection of neurological disorders, and in this direction, the development of efficient biomarkers could be targeted using technological innovations in health sciences. Due to the lack of effective analytical methods, most neurological disorders are clinically misdiagnosed. Newer, reliable methods may provide biomarkers specific to these diseases and could be utilised for accurate diagnoses and thus would be useful in treatment interventions. Biomarkers are generally elements associated with specific indicators corresponding to different parts of the body such as blood, saliva, urine and cerebrospinal fluid (CSF). These indicators are useful tool for estimation of physiological or pathological conditions linked to clinical manifestations of any disease [2]. Owing to their usefulness in the neurological disorders they have great societal as well as medical significance [3, 4].

Biomarkers are used for disease diagnosis at an early stage. Moreover, it can detect disease progression and efficacy of the administered drugs. An ideal biomarker should be easy to detect and quantify. It should have stability and reproducibility, and should not be affected by disease factors. Biomarkers can be identified by imaging, neurophysiology, and also by the advent of recent omic-based techniques. The high-throughput omics technologies are well suited for biomarker discovery. It helps in detailed bioanalysis of the molecular samples, even at very low concentrations. The final application of developed biomarkers needs clinical validation to confirm the candidate biomarker in diagnosis and disease progression.

The biomarkers for any disease may be used for any of the three below mentioned approaches:

1. Diagnostics
2. Measurement of disease severity
3. Assessing motor and non-motor prognosis.

Several omics -based approaches have been applied for the biomarker discovery in the neurological disorders. Genomics, proteomics and metabolomics along with the tools in each omics approach and the recent reports have been discussed in detail. Overview of all the omics approach and associated techniques for biomarker discovery is shown in Fig. (1).

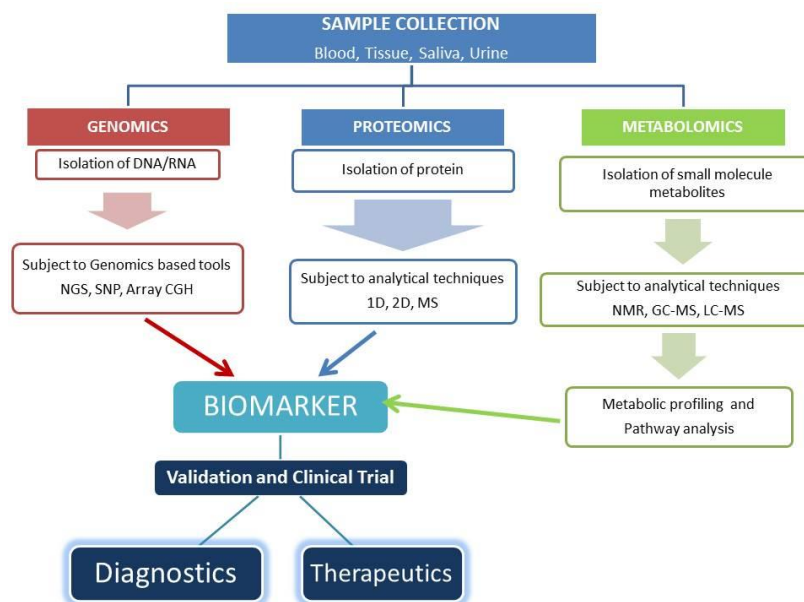


Fig. (1). Schematic representation of Omics-intervention in biomarker development.

## GENOMICS

It deals with the analysis of the whole genomes of any organisms like human genome. Lately it is used for screening the genome for disease diagnosis and thereby designing medicine. This has given way to the personalized healthcare which was otherwise impossible through traditional healthcare system. Extensive study by many research groups have led to the discovery of new genomics based biomarkers for neurological disorders.

Common genomics based techniques used for biomarker study in neurological disorders are discussed.

# Emerging Therapeutic Approaches for Neurodegenerative Diseases

Rajesh R. Ugale<sup>1,\*</sup> and Lopmudra Sarode<sup>1</sup>

<sup>1</sup> Department of Pharmaceutical Sciences, Rashtrasant Tukadoji Maharaj Nagpur University, Nagpur (MS), India

**Abstract:** The most common neurodegenerative diseases (ND) include Alzheimer's disease (AD), Parkinson's disease (PD) and Huntington's disease (HD), as well as frontotemporal dementia (FTD) and amyotrophic lateral sclerosis (ALS). Protein misfolding and aggregation are the key hallmarks of these neurodegenerative diseases, which may lead to cell death, axonal regeneration failure, demyelination, and overall neuronal structural and functional deficits. Usually, ND is diagnosed at a very advanced stage and conventional therapies are directed at treating neurological symptoms but have no effect on disease progression. In general, several pathological processes contribute to misfolding proteins/protein aggregates and their post-consequences, including impairment of autophagy, microtubule destabilization, neuroinflammation, proteostasis, mitochondrial dysfunction, oxidative stress, endoplasmic reticulum stress, calcium homeostasis, and neurogenesis impairment. Indeed, several signaling pathways critically linked with these pathological processes are now becoming attractive targets and investigated for their beneficial effects by restricting the progression of ND. In particular, certain signaling mechanisms and proteins found to show an integral involvement in the pathogenesis of ND and had shown promising results in preclinical and/or clinical contexts. For ex; novel autophagy stimulators, drugs acting on mTOR, NRF2, TLR, purinergic signaling; drugs acting on neuroinflammatory signaling pathways, Heat Shock Proteins (HSP), sestrins, sirtuins, some PDE-inhibitors, miRNA's have gained a lot of attention in the therapy of ND and are included in the following discussion.

**Keywords:** Heat shock proteins, Neurodegenerative disorder, Neuroinflammation, Novel therapy, miRNA, mTOR, NRF2, PDE inhibitor, Protein misfolding, Purinergic, Sirtuins, TLR.

## INTRODUCTION

Neurodegenerative diseases affect different regions of the brain, but overall they share similar etiology at the cellular and molecular levels. The common feature of

\* Corresponding author Rajesh R. Ugale: Department of Pharmaceutical Sciences, Rashtrasant Tukadoji Maharaj Nagpur University, Nagpur (MS), India; Tel: +91-9822717181; E-mail: ugale.rajesh@gmail.com



ND is the accumulation of aggregated proteins as amyloid deposits in different areas of the nervous system. Therefore, ND also called as “Tauopathies”, in which, the neurons accumulate abnormal forms of tau, including hyperphosphorylated, conformationally altered, mislocalized, fragmented, oligomeric, and fibrillar forms *i.e.*, amyloid in AD, misfolded Huntington protein in HD, aggregation of ubiquitinated proteins in ALS, Tau and  $\beta$ -amyloid accumulation in MS,  $\alpha$ -synuclein accumulation in PD, and tau neurofibrillary tangles in traumatic brain injuries. Conventional therapies for ND, for example, l-dopa for PD and cholinesterase inhibitors for AD, although are used for treatment of the neurological symptoms, substantially do not affect the disease progression. Delayed stimulation of the downstream signaling pathways and regulation of the aberrant genes affect the therapeutic actions of conventional therapy. These signaling pathways and genes promote to multiple pathophysiological processes, including abnormal pro/anti-apoptotic signaling, mitochondrial dysfunction, dysregulation of autophagy, activation of the necrosome by stress and/or inflammation, *etc.*, causing to neuronal degeneration. Recent investigations have been directed toward the characterization of the downstream signaling for treatment, with the promise of identifying novel therapeutic targets. Several signaling pathways and targets have been identified and some of them best characterized are discussed here. Among the signaling mechanisms, mammalian target of rapamycin (mTOR) pathway received high attention, since, it contributes to several pathological aspects of neurodegeneration including autophagy. Moreover, rapamycin and its analogues have shown promising results in the preclinical and clinical trials of ND. Sestrins, a family of evolutionarily conserved stress-inducible proteins, are actively regulated by DNA damage, hypoxia, and oxidative stress. Especially sestrin2, can counteract oxidative stress, reduce mTOR expression, and promote cell survival. Similarly, several autophagy stimulators have been investigated with significant potential in ND. The heat shock proteins (HSP) play a vital role in regulating protein-degradation pathways to repair protein folding by chaperones. Similarly, much work is awaited on drugs acting on macroautophagy. Macroautophagy help to remove misfolded and abnormally aggregated proteins to maintain neuronal health. Sequestosome 1 (SQSTM1/p62) is a scaffold protein closely involved in the macroautophagy process and has shown interaction with the development of ND. Furthermore, SQSTM1/p62 also serves as a signaling hub for multiple pathways associated with neurodegeneration, providing a potential therapeutic target in the treatment of ND. On the other hand, Toll-like receptors (TLR) are well-characterized family of pattern recognition receptors (PRR). The contribution of microglial TLR signaling has been extensively investigated in ND. TLR also plays a significant role in neurogenesis and neurite outgrowth. Further, nuclear factor erythroid 2-related factor 2 (NRF2), a strong regulator of antioxidant response is currently

emerging as a major component of the transduction machinery to maintain proteostasis, critically involved in ND.

Sirtuins (SIRT1-SIRT7) are unique histone deacetylases that interact with multiple signaling proteins, transcription factors and poly (ADP-ribose) polymerases (PARPs) another class of NAD<sup>+</sup>-dependent post-translational protein modifiers and are considered as a highly promising target in ND. Further, drugs interfering with microtubule (MT) dynamics including MT stabilizers, such as epothilones and taxanes, used for the treatment of cancer have also shown therapeutic effects in ND. Neuroinflammation regulated by resident glial cell microglia is an important pathological marker contributing to disease progression. Leukotrienes are lipid mediators of neuroinflammation. Leukotriene signaling acts in proinflammation stage on microglia and astrocytes. Several molecules acting on the leukotrienes are also investigated in ND. In recent years, the 5-Lipoxygenase (5LO), has gained attention as a therapeutic target in ND. 5LO is a source of inflammatory leukotrienes and is upregulated in AD and related tauopathies. Similarly, microglial NADPH oxidase 2 (NOX2) activation is identified as an important downstream effector of Mac1 signaling involved in the release of proinflammatory factors. Leucine-rich repeat kinase 2 (LRRK2) is a common gene implicated in PD and many inflammatory processes. In addition, researchers have also extensively investigated the role of purinergic signaling in ND. Similarly, phosphodiesterase type 5 inhibitors (PDE5-I) have recently emerged as a potential therapeutic strategy for ND by increasing the expression of nitric oxide synthases and accumulation of cyclic guanosine monophosphate and activating protein kinase G. Thus, the identification of molecules or peptides that interfere with these signaling pathways may prevent the neurodegenerative progression. Some investigations on signaling pathways are promising and can be considered as novel therapeutic approaches in ND.

### **mTOR Signaling**

The mammalian target of rapamycin (mTOR) is a 289-kD serine/threonine multidomain protein with a kinase domain and an FKBP12 binding domain. mTOR in conjugation with other proteins makes two complexes: mTOR complex 1 (mTORC1) and mTOR complex 2 (mTORC2). Both complexes located in cytoplasm are phosphorylated by AKT dependent phosphoinositide 3-kinases (Pi3K). mTOR signaling is regulated by insulin, IGF-1, LKB1/AMPK, PI3K/Akt, GSK-3 $\beta$ , IKK $\beta$ , MAPK, and p53. Activated mTORC1 may lead to translation of mRNA, suppression of autophagy, ribosome biogenesis, and activation of transcription. Treatment of L-DOPA found to activate mTORC1 involved in neural synaptic rehabilitation in mouse models of PD [1]. The role of mTOR is much explored in AD. In clinical settings, mTOR signaling is found to be closely

## Medicinal Plants and Natural Compounds as Antiparkinsonian Agents

Walia Zahra<sup>1</sup>, Hareram Birla<sup>1</sup>, Saumitra Sen Singh<sup>1</sup>, Aaina Singh Rathore<sup>1</sup>, Hagera Dilmashin<sup>1</sup>, Richa Singh<sup>1</sup>, Priyanka Kumari Keshri<sup>1</sup> and Surya Pratap Singh<sup>1,\*</sup>

<sup>1</sup> Department of Biochemistry, Institute of Science, Banaras Hindu University, Varanasi-221005, India

**Abstract:** Medicinal plants have been used since ages for the treatment of human diseases in the Indian medicinal system of Ayurveda. Parkinson's diseases (PD) on the other hand is a kind of neurodegenerative disorder that shows debilitating symptoms; and the treatment of the disease rely on the symptomatic management. The drugs available for the treatment of the disease show severe side effects on prolonged usage. Thus, many medicinal plants and their derivative natural compounds have been tested for their anti-Parkinsonian activity with minimal side effects. *Mucuna pruriens*, *Withania somnifera*, *Tinospora cordifolia* are the example of medicinal plants that have shown anti-Parkinsonian activity while the natural compounds found in medicinal plants like Baicalein, curcumin, Ginseng, Resveratol have also maintained the nerve cell function and prevented the neuronal death. Thus, the polyphenols and other bioactive constituent of medicinal plants should be further studied for their therapeutic intervention against PD.

**Keywords:** Parkinson's disease, Medicinal plants, polyphenols, neurodegeneration, neuroinflammation, oxidative stress, dopaminergic neurons, substantia nigra.

### INTRODUCTION

The selective loss of dopaminergic neurons in the substantia nigra (SN) and resultantly the reduced level of dopamine (DA) in the striatum; is attributed to be the main cause of Parkinson's disease (PD). The reduced level of DA in striatum leads to the imbalance in the level of neurotransmitters like that of DA and acetylcholine. PD patients show symptoms such as tremor, bradykinesia, myoto-

---

\* Corresponding author Surya Pratap Singh: Department of Biochemistry, Institute of Science, Banaras Hindu University, Varanasi-221005, UP, India; Email: suryasingh@hotmail.com

nia and others that affect their quality of life [1, 2]. The therapeutic strategies followed for the treatment of PD these days depend on relieving the motor symptoms, novel non-dopaminergic drug discovery and development of neuroprotective drugs for modifying the pathogenesis of PD [3]. The etiology of PD is not yet fully understood, but different studies have suggested the role of oxidative stress, neuroinflammation, protein aggregation, excitotoxicity and mitochondrial dysfunction in the pathogenesis of PD [4, 5]. Though, the neuropathological features of PD cannot be wholly mimicked by any known model [6], still the neurotoxin models of PD has stood up as the worthy tool for assessing the adverse effects of PD and developing the novel therapeutic targets [7]. PD has been documented in different parts of the world since ages; and countries of Asia such as India, Japan, China and Korea have been using the herbal based medicines in different combinations based on their experiences [8]. The use of medicinal plants in the treatment of PD attributes to our dependence on products based on natural origin and these plants serve as an important source for the medicines [9 - 15]. Last decade has put an enormous addition in PD research and bioactive constituents in the medicinal plants have been identified that exhibits health-promoting qualities for the treatment of this disease [16]. In China about 22,500 medicinal herbs are used in relevance to PD treatment, but their investigation in experimental models and clinical trials are not yet done to portray them as a potential drug for the disease [17]. Comparatively, many medicinal plants don't have a nutritional role in human diet and are only responsible for managing specific diseases for shorter or longer duration [18]. Therefore, these therapies do need a proper re-investigation of these medications and therapies in pre-clinical studies so as the development of novel therapeutic target can be done [19]. Research in the field of understanding PD is done widely, still there is a need to develop a potential drug candidate for the disease as the available treatment strategies does not meet to the satisfactory results. Apart from only targeting the treatment, neuroprotection should also be taken into consideration so as to inhibit the progression of the disease pathogenesis [20, 21]. Thus, credibility in the treatment strategies can be added by incorporating the bioactive components obtained from the natural origin for the disease management [22]. Exclusively, plant extracts and their derivative; bioactive components has been tested in research laboratories and they have been seen to have great potential to offer neuroprotection and hence stand as a possible drug candidate for PD. The alternative traditional medicine system of Ayurveda is used in India from ancient times and PD is described as "Kampavata" in it [23]. In this medicine system, *Mucuna pruriens* (Mp) has wide importance and is used as a medicine for PD treatment. Furthermore, scientific investigations have reported the presence of levodopa (L-DOPA) that provides long-term prevention from the debilitating symptoms of the disease [23]. Powdered seed formulation of Mp has shown

beneficial effects on PD patients in clinical trials; without showing the associated dyskinesia symptoms. Commercial preparation of Mp, namely Zandopa (HP-200) is available for the treatment of the disease [24].

The pharmacological research deals with the involvement of medicinal plants and their derivatives in targeting the specific sites that result in either neuroprotection or inhibition of the mediators involved in the pathogenesis of PD. The compounds can be enriched with the antioxidant properties in the brain tissue or they can have anti-inflammatory properties that targets neuroinflammation inside the brain. They can also show their effect on the dopaminergic system, either by acting as an agonist or by reducing the dopamine metabolism. Another group can act as antagonist for muscarinic or ionotropic glutamate receptors in CNS. The best group can act on adenosine receptor as an antagonist; because the relationship between PD and adenosine system has been seen. These all parameters can be an effective target for managing the symptoms of PD and providing better therapeutic strategies [25]. Natural compounds isolated from medicinal plants are being used for treating different neurodegenerative disorders. These plants can be useful in maintaining the nerve cell function and decelerate the loss of dopaminergic neurons in the case of PD. The plants such as *Mucuna pruriens*, *Bacopa monnieri*, *Withania somnifera*, *Centella asiatica*, *Panax ginseng*, *Pueraria lobata*, *Paeonia alba*, *Curcuma longa*, and *Scutellaria baicalensis* and (Table 1) have been studied for anti-Parkinsonian activity.

**Table 1. Anti-Parkinsonian activity of Medicinal plants in PD models (adapted from [25]).**

Medicinal Plants	Family	Experimental Model	Reference
<i>Solanum lycopersicum</i> L.	Solanaceae	Rotenone-intoxicated mouse model	[81]
<i>Albizia adianthifolia</i> W.Wight	Leguminosae	6-OHDA rodent model	[82]
<i>Centella asiatica</i> (L.) Urb.	Apiaceae	Aggregation model of $\alpha$ -synuclein	[83]
<i>Crocus sativus</i> L.	Iridaceae	MPTP-intoxicated mouse model	[84]
<i>Decalepis hamiltonii</i> Wight & Arn.	Asclepiadaceae	Transgenic <i>Drosophila</i> model	[85]
<i>Lycium chinense</i> Mill.	Solanaceae	Rotenone-induced PC12 cells	[86]
<i>Tinospora cordifolia</i>	Menispermaceae	6-OHDA	[87]
<i>Withania somnifera</i> (L.) Dunal	Solanaceae	MPTP rat model	[88]
<i>Ocimum sanctum</i> L.	Lamiaceae	<i>Drosophila</i> model	[89]
<i>Sida cordifolia</i>	Malvaceae	Rotenone-intoxicated model	[90]

## Neuropharmacology in Alzheimer and Huntington Disease

**Bandna Gupta<sup>1,\*</sup> and Kopal Rohatgi<sup>1</sup>**

<sup>1</sup> *Department of Psychiatry, King George's Medical University, Lucknow, India*

**Abstract:** The Alzheimer's disease and Huntington's disease are the two important neurodegenerative disorders currently under research for various therapeutic approaches ranging from newer biochemical molecules, plant extracts and food supplements to highly advanced biotechnological and genetic therapies.

Alzheimer's disease (AD), one of the leading causes of disability in the elderly population is exponentially rising worldwide. The acetylcholinesterase inhibitors and memantine, the mainstay of treatment only slow down the disease progression and provide symptomatic improvement. The cholinesterase inhibitors, rivastigmine and donepezil apart from improving cognition also delay hospitalization and reduce behavioural and psychological symptoms of dementia. Other cholinesterase inhibitors and cholinomimetic targets like muscarinic and nicotinic receptor agonists are in development. Extensive research in this area in the past few decades has given insight into the cellular and molecular pathogenesis of the disease. This has led to the development of certain novel strategies to modify the disease progression and prognosis. This includes amyloid and tau-based therapeutics, various immunotherapies, vaccines and food and plant supplements. Other new promising agents under research are anti-inflammatory drugs, neurotrophic factors and antioxidants. Huntington's disease is a rare inherited neurodegenerative disorder producing motor, cognitive and psychiatric symptoms. A greater understanding of the pathology in the recent past has led to research into the development of newer therapeutic agents mainly DNA and RNA based therapies and technologies using gene editing tools.

Several of these putative drugs are in preclinical studies and many of them have failed to show positive results. In this section, we are going to discuss the approved therapies for AD and HD currently in use, the status and evidence regarding drugs in various stages of clinical trial and mention advanced biotechnological and gene therapies under investigation.

---

\* **Corresponding author Bandna Gupta:** Department of Psychiatry, King George Medical University, Lucknow, India; Tel: 9335267005; E-mail: drbandna@yahoo.in

**Keywords:** Alzheimer's disease, Amyloid, Beta-amyloid, Cholinesterase inhibitors, Disease modifying therapies, Huntingtin, Huntington disease, Secretases, Tau.

## **INTRODUCTION**

Dementia is a chronic and progressive condition manifesting as loss of cognitive functions that is age inappropriate and not explained by the natural aging process (WHO). The cognitive functions include memory, attention and concentration, orientation, learning capacity, language, comprehension, calculation and judgement. The most common is Alzheimer's dementia (AD) followed by vascular dementia, mixed dementia and other neurodegenerative disorders like Lewy body disease and Frontotemporal Dementia [1, 2]. Epidemiology, Aetiology, Molecular biology, Pathophysiology and Biomarkers of AD and HD have already been covered in the previous chapters.

## **ALZHEIMERS DISEASE**

As the life expectancy is continuously increasing, it has led to an increase in the number of patients with dementia, particularly AD. It is expected that people suffering from dementia will rise to 82 million in 2030 and 152 million in 2050. This has led to increased research in the area of new drugs for primary, secondary or tertiary prevention of dementia [1].

Most AD patients come under the category of Sporadic AD, which is further divided into early onset with age less than 65 years (3-5%) and late-onset forms with age more than 65 years (95-97%). The dementia patients having an early onset, around fourth decade are categorised as Familial AD (FAD) and caused by inherited mutations, amounting to 2 percent of the diagnosis [3, 4]. Pathology underlying FAD involves mutations in genes on chromosome 21, chromosome 14 and chromosome 1, coding for amyloid precursor protein (APP), presenilin 1 (PS1) and presenilin 2 (PS2), respectively [5, 6]. This results in the formation of beta-amyloid ( $A\beta$ ), especially the peptide long form ( $A\beta_{1-42}$ ). Whereas in sporadic AD, approximately 25% patients are carriers of a mutation on chromosome 19 coding for lipid transport protein e4 allele of the ApoE gene (apolipoprotein E). At present, the fundamental mechanisms by which ApoE helps to increase  $A\beta$  levels are unclear [3, 7, 8].

As of now, the mainstay of treatment for mild to moderate AD is cholinesterase inhibitors (CIs) which counterbalances neurotransmitter dysfunction underlying the disease. Five medications for the treatment of Alzheimer's disease have been approved by the US Food and Drug Administration (FDA) that provide moderate benefits in memory, behaviour and function. Four of these drugs Psychiatric drugs act by inhibiting acetyl cholinesterase and the fifth drug acts as an antagonist on

N-methyl-D-aspartate receptor (NMDA). Lower dosages of psychiatric medicines like antipsychotics, anxiolytics and antidepressants can be used for the Behavioural and Psychological Symptoms of Dementia (BPSD). Various other treatments under research include compounds targeting extracellular amyloid  $\beta$  ( $A\beta$ ) plaques and intracellular neurofibrillary tangles, the two major pathological substrates of the disease. Over the past 10 years, many medications have been researched aiming to modify or change the course of the disease [5].

The naturalistic course of AD is one of gradual worsening. Besides, symptomatic management of dementia only slows the progression of the disease while when disease modifying medication is given, further deterioration can be prevented, thereby altering and slowing the path. Treatment is directed towards managing cognitive and behavioural and psychological symptoms, aggression, hostility and insomnia, thereby improving the global functioning of the patient.

## **NEUROPATHOLOGY OF AD**

Detailed understanding of pathology and neurobiology of dementia is needed to plan treatment for the disease. The main neurotransmitter system involved in AD is the cholinergic neurons predominantly in the basal forebrain. These cholinergic neurons maintain cerebral blood flow in the cortex thereby responsible for cognitive functions like memory, attention, concentration, learning, cerebral cortex growth and sleep wake cycle regulation. Thus, multiple neurobiological involvement of cholinergic system can be partly seen as responsible for symptom complexity and presentation of dementia as a syndrome. Dysfunction in the cholinergic system in AD can be seen at various steps, including decreased activity of enzyme choline acetyltransferase, decreased absorption of choline, decreased acetylcholine synthesis and altered levels of receptors for acetylcholine. Glutamate, another neurotransmitter responsible for proper cortical functioning and cognitive functions, is an excitatory neurotransmitter primarily in the neocortical and hippocampal region of the brain. Glutamate acts on NMDA receptors present on post-synaptic membrane and its excessive secretion in the synaptic cleft due to more presynaptic release and reduced reuptake leads to tonic sustained activation of NMDA receptors. There is excess glutamate present in the extracellular space in AD [9, 10]. This slow and sustained tonic activation or 'excitotoxicity' in AD is in contrast to the acute and short lasting tonic activation seen in stroke and epilepsy. However, in the presence of underlying impaired insulin sensitivity as seen in Diabetes Mellitus, abnormal receptor density and mitochondrial functioning, the normal physiological level of glutamate becomes excito-toxic.



**CHAPTER 14****Brief Description of Public Health and Burden of Neurodegenerative Diseases****Vandana Ranjan<sup>1,\*</sup>, Aisha<sup>1</sup> and Kalpna Verma<sup>1</sup>**<sup>1</sup> *Department of Biochemistry, Dr. Ram Manohar Lohia Avadh University, Faizabad, Ayodhya - 224001, UP, India*

**Abstract:** Physical and mental well-being is treasure for mankind in a competitive and progressive global scenario. For a country, result oriented tasks can be accomplished only with its healthy population. Along with many diseases of global concern, neurological disorders have drawn concern globally as these are sharing an increasing proportion in global burden of diseases. Further cases of neurodegenerative disorders, majorly affecting aged population, have been recently reported to record a considerable increase which has complicated the health and care-giving (old age homes) services as part of public health. Many public health policies have been laid down by many developed and developing countries in accordance of WHO guidelines which in turn based on GBD studies, made till date. Major share of neurodegenerative disorders is contributed by Alzheimer's Disease, Parkinson's Disease, Amyotrophic Lateral Sclerosis & Multiple Sclerosis. The recent past has witnessed growing number of deaths and disability adjusted life years, DALY, caused by neurodegenerative diseases. Public health services and related government policies are not enough, according to WHO, to properly address the current situation. Lack of public awareness towards neurological disorders of all kind, is one of the major challenges to Figure out actual data; for prevalence of neuro-disorders.

**Keywords:** GBD study, WHO, Public health, neurological disorders, Neurodegenerative diseases, Alzheimer's disease, Indian status.

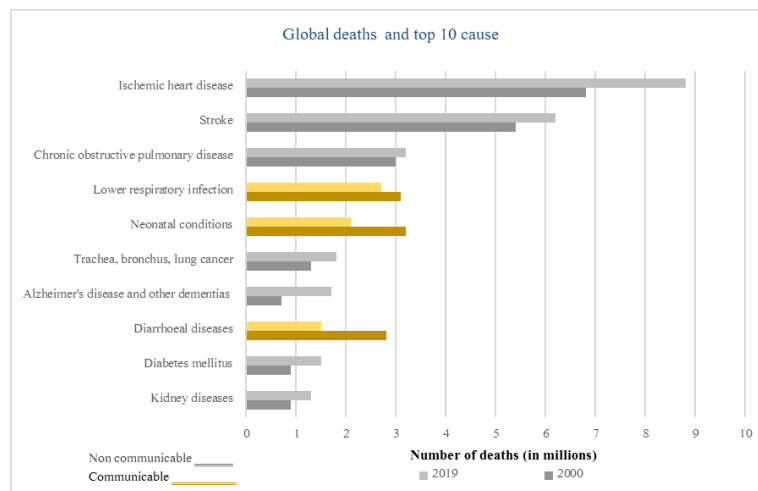
**INTRODUCTION**

Health of an individual depends on accessibility of drinkable water, breathable air, hygienic living, proper nutrient supply with adequate meals as per nature of work, work hours, hours of quality sleep and many more. As we can think that, as a set, these all parameters are part of surrounding and environment around an individual, hence their accessibility is not confined only to any one person but to

---

\* **Corresponding author Vandana Ranjan:** Department of Biochemistry, Dr. Ram Manohar Lohia Avadh University, Faizabad, Ayodhya - 224001, UP, India; Email: ranjanrml@gmail.com

the whole community sharing the same surrounding and environment. A demographic distribution has always been impactful, over the sincere and evenly distribution of resources among the respective population; therefore, we count on 'public health' in order to consider health of each individual in a village, town, city or a country. Further being a component of social structure, social well-being is also an important component of psychological-well-being and ultimately of mental health. Public health is major concern for a country to accomplish sustainable development of the country at each front because health of its citizen affect productivity in all aspects and ultimately economy of the country. Providing basic health services is therefore one of the government's primary responsibilities worldwide which include vaccination, self-hygiene awareness, preventing use of drugs of abuse, even promoting small family structure to optimize the availability of resources for each member of the family. We can sum up public health as a multidisciplinary field with aim of propagating knowledge and practices to prevent spread of communicable and non-communicable diseases. World Health Organization (WHO) has key role in setting up policies for health services in countries worldwide through its program 'WHO Special Initiative for Mental Health (2019-2023): Universal Health Coverage for Mental Health', launched in 2019 [1] and followed-up program successively [2]. Major non communicable diseases (NCD) that are central to public health goals include cancer, cardiovascular, diabetes, respiratory and communicable infectious diseases [3]. (Fig. 1) presents an overview for major diseases of global concern, based on number of deaths caused by these diseases individually. Stroke, (classified as neurological disorder under International Classification of Disease, ICD-11) is second in the list of top ten cause of global deaths [4]. This list also includes Alzheimer's disease and other Dementia at seventh place as cause of global deaths. Together these two neurological disorders (NDs) claimed approximately six million deaths globally in 2020, according to WHO [5]. Recent studies have come up with data that shows a considerable, alongside to above mentioned diseases, an increase in cases of neurological disorders all over the world; where developed countries are found to have comparatively a large case registry against developing countries and also against their own history. An unhealthy individual is naturally become a burden for himself/herself and his family, so for the society. Likewise unhealthy population is burden to a society and its country that needs to be addressed on an urgent basis by the country itself and in collaboration with other countries in case of diseases affecting global population. For example, recent pandemic of COVID 19, its global impact and persistence over time has bring about vigorous changes in health programs worldwide [6], as it has affected all aspects of growth of all nations, from academics to economy to families in isolation, as well as, an entity in society.



**Fig. (1).** A graphical summary for top ten diseases which are leading cause of deaths globally. (Source: WHO global health estimate).

## STAKEHOLDERS IN PUBLIC HEALTH

Awareness is key to achieve health goals both at individual level and at public level. The role of government is primary which is supported by a well-informed population that provide health care services through NGOs, societies, organizations in public and private set-ups. World Health Organization, is the supreme body at international level that guide and monitor health policies and their implementation at global scale. Under leadership of WHO, some global health projects and programs are running in public private partnership [1, 6], and in India the ‘National Health Mission (NHM)’ is being run by Government of India targeting urban (NUHM) and rural (NRHM) population [7].

Towards public health goal, developed countries move a huge fund towards health sector as compared to developing countries. According to Economic Survey, 2019-20, India - a developing country, has health expenditure budget of 1.6% of GDP as compared to that of Germany (9.4%), USA (8.5%) and China (3.2%) [8]. Public health policies of a country are concerned with, majorly, prevention of diseases, creating an ‘accessible and affordable to all’ health services infrastructure and these all-together aim to increase life expectancy along with health, so the productivity of a country.

‘GBD – Global Burden of Diseases’ is a study being carried out periodically as international project by WHO in collaboration with world bank and the Harvard School of Public Health [9]. Recent GBD study have estimated some diseases which are leading cause of death globally. The data provided by WHO shows that while there is a global success to control many diseases during a period from year

## SUBJECT INDEX

### A

- Abnormalities 4, 42, 177, 233  
 mitochondrial 4, 177, 233  
 protein conformational 28
- Accumulation 26, 28, 29, 30, 33, 36, 38, 39,  
 40, 45, 73, 75, 162, 163, 228, 229
- aberrant protein 45
- Acetylation 41, 105, 106  
 histone 41
- Acetylcholine 199, 220, 221, 222, 223, 226
- Acetylcholinesterase 176
- Acetyltransferases 170
- Acid(s) 5, 15, 26, 30, 31, 33, 36, 40, 45, 60,  
 63, 71, 105, 110, 129, 132, 154, 176,  
 229, 235, 236, 245  
 amino 26, 30, 31, 33, 36, 40, 45, 71, 105,  
 132, 236  
 arachidonic 5, 60  
 aromatic amino 154  
 docosahexanoic 5  
 folic 235  
 nucleic 66, 129  
 okadaic (OA) 176  
 quinolinic 110  
 tauroursodeoxycholic 245  
 tricarboxylic 15  
 uric 63  
 valproic 229
- Action 95, 162  
 therapeutic 162  
 trophic 95
- Activation 31, 79, 101, 104, 108, 166, 175  
 astrocytic 31  
 caspase 79, 101, 104  
 glial cell 166  
 immune cell 175  
 neuronal 108
- Activity 15, 16, 18, 19, 20, 27, 32, 64, 78, 79,  
 120, 122, 176, 207, 208, 209, 225, 227,  
 230  
 anti-inflammatory 208, 209
- antiinflammatory 168
- antiinflammatory 208  
 anti-inflammatory 209  
 anti-microbial 209  
 chemokine 122  
 mitochondrial 120  
 neurotrophic 176  
 phagocytic 207  
 proteasome 79
- Adeno-associated virus (AAV) 246
- Adenosine 120, 201  
 system 201  
 triphosphate 120
- Affymetrix oligonucleotide microarray  
 technique 147
- Agents 60, 95, 129, 138, 168, 172, 177, 230,  
 232, 238, 237, 247  
 antiinflammatory 168  
 flavonoid 232  
 infectious 129  
 neuroprotective 95, 238
- Aggregates 26, 39, 41, 42, 43, 44, 46, 78, 90,  
 104, 139  
 cytoplasmic 44  
 intraneuronal 42  
 nuclear 41
- Aggregation 1, 2, 3, 26, 30, 33, 34, 38, 43, 44,  
 45, 46, 95, 161, 162, 202, 228  
 and deposition of misfolded proteins 2  
 competent nucleus formation 38  
 misfolded protein 1, 202
- Agonist 42, 94, 110, 201, 232  
 natural 94
- AIF translocates 22
- Alcohol dehydrogenase 75
- Aldehyde dehydrogenase 75
- Alpha 205, 227  
 secretase 227  
 tumor necrosis factor 205
- ALS-related mutations 44
- Altered cell metabolism 154
- Alzheimer's 132, 219, 233  
 dementia 219, 223

- encephalopathy 132
  - AMP-activated protein kinase 165
  - AMPK 165, 170, 172, 177
    - activation 165
    - activator 165
    - dependent autophagy activation 172
    - pathway 177
  - Amyloid aggregation 30, 223
    - inhibition 223
  - Amyloid fibers 29
  - Amyloid fibrils 27, 29, 33, 34, 36, 38, 129
    - aggregates 129
  - Amyloidogenic 174, 227, 234
    - APP processing 174, 234
    - processing 227
  - Amyloidopathy 171
  - Amyloidosis 34
  - Amyloid 6, 29, 30, 31, 63, 90, 92, 131, 132, 164, 170, 171, 174, 219, 226, 227, 228, 229, 235
    - plaques 30, 92, 131, 174, 228, 235
    - precursor protein (APP) 6, 29, 30, 31, 63, 90, 92, 131, 132, 164, 170, 171, 219, 226, 227
    - targeted immunotherapy 229
    - targeted strategies 226
  - Amyotrophic lateral sclerosis 8, 42
  - Anomalies 100, 144, 146
    - screens 146
  - Antiinflammatory 176, 205
    - effects of ginsenoside 205
  - Antioxidants 59, 63, 65, 66, 67, 111, 201, 202, 207, 228, 232, 235, 238, 247
    - enzyme activity 65
    - mitochondrial 232
    - properties 201, 207
    - system 59, 202
  - Anti-oxidative genes 40
  - Anti-Parkinsonian activity 199, 201, 209
  - Anti-PrP antibodies fluorophores 130
  - Antipsychotics, second generation 238
  - Apoptosis 13, 20, 21, 22, 60, 61, 62, 63, 64, 65, 79, 177, 204, 205, 206, 207, 208, 209
    - cellular 20
    - dopamine-induced 22
    - inducing factor (AIF) 207
    - inhibiting mitochondrial 177
    - neuronal 13, 79
  - Apoptotic pathway 17
  - Astroglial response 206
  - Astrogliosis 164
  - ATP 4, 13, 14, 15, 79, 120, 167
    - and inhibited brain 206
    - competitive inhibitors 164
    - deficiency 206
    - production in nonsynaptic brain mitochondria 15
    - synthase 15
    - synthesis 14, 15
  - Atrophy 63, 77, 91, 108, 119, 173, 228
    - astrocytic end-feet 173
    - hippocampal 228
    - neuronal 63, 108
  - ATTR 34, 35
    - deposits 35
    - fibrils 35
    - polyneuropathy amyloidosis 35
  - ATTR amyloidosis 34, 35
    - wild-type 34, 35
  - Autism spectrum disorder (ASD) 147
  - Autophagy 20, 161, 162, 163, 164, 165, 168, 169, 170, 171, 172, 173, 178
    - defective 14
    - genes 171
    - regulation of 164, 173
  - Autosomal dominant dementia 222
- B**
- Bacterial 128, 266
    - encephalitis 266
    - infections 128
  - Bioinformatics analysis 154
  - Biomarker(s) 71, 77, 88, 89, 94, 106, 107, 115, 121, 122, 138, 144, 145, 148, 150, 154, 155
    - biochemical 71, 77, 107
    - of Huntingtin disease 106

- brain inflammation 138
- diagnostic 121, 122
  - discovery 115, 144, 145, 148, 150, 154, 155
- fluid 94
- genetic 71
- genetic-immunogenetic 121, 122
- imaging 71, 115, 121, 122
- prognostic 88, 89
- proteomic 71
- Blood 34, 133
  - nerve barrier (BNB) 34
  - pressure 133
- Botulinum toxin injections 242
- Bovine spongiform encephalopathy 125, 129
- Bradycardia 224
- Bradykinesia 14, 36, 65, 177, 199, 240
- Brain 9, 30, 41, 59, 80, 91, 103, 122, 131, 135, 166, 173, 175
  - damage, traumatic 9
  - derived neurotrophic factor (BDNF) 41, 103, 175
  - diseases 131
  - disorders 80
  - dysfunction 59
  - inflammation 122
  - ischemia 166
  - metabolism 135
  - parenchyma 91, 173
  - proteins 30
- Brainstem motor neurons 29
  
- C**
- Cardiomyopathy 34, 35
- Catecholamine neurotransmission 235
- Cell damage 61
  - oxidative stress-induced 60
- Cell death 16, 17, 19, 202, 222
  - dopaminergic 202
  - neuronal 16, 17, 19, 222
- Cell signaling pathways 92
- Cellular 20, 46, 223
  - calcium haemostasis modulation 223
  - stress responses 20, 46
- Central nervous system (CNS) 2, 3, 26, 28, 29, 71, 72, 115, 117, 118, 129, 130, 138
- Cerebrolysin 234
- Cerebrovascular disorders 266
- Chaperones 162, 172
- Chelators 174
- Chemiluminescence 130
- Choline acetyltransferase 221
- Cholinergic 220, 221, 225, 226, 234, 236
  - hypothesis 221
  - neurons 220, 221, 225, 226, 234
  - pathway activity 236
- Cholinesterase inhibitors 89, 92, 162, 218, 219, 222, 223, 224, 236, 243
- Chorea 39, 240, 241, 242, 243
  - ameliorating 242
- Chromatin 22, 106
  - condensation 22
  - regulation activity 106
- Chromosome 7, 17, 33, 39, 42, 44, 131, 132, 146, 219, 240
- Chronic traumatic encephalopathy 28
- Circular dichroism 33
- Clinically isolated syndrome (CIs) 116, 117, 121, 219, 222, 224
- CNS 164, 265
  - cancer 265
  - myelin disorders 164
- Coding 6, 6
  - apolipoprotein 6
  - glycogen synthase kinase 6
- Cognitive 14, 65, 88, 103, 136, 164, 172, 176, 221, 225, 236, 247
  - deficits 14, 65, 136, 172, 176
  - dysfunctions 88, 103
  - impairment 164, 221, 225, 236, 247
- Common genomics 145
- Communicative disorders and stroke 270
- Components, proteostasis 32
- Condensation 22, 208
  - nuclear 22
- Confocal 130
  - microscope 130
  - microscopy 130

- Constipation 225  
Copper 65, 173  
    metabolism 173  
    /zinc superoxide dismutase 65  
Copy number variants (CNVs) 135  
Correlation spectroscopy (COSY) 152  
COX inhibition 207  
CREB 41, 105, 170  
    bundling protein 105  
    phosphorylated 170  
CRE function 110  
Creutzfeldt-Jakob disease (CJD) 28, 125, 129  
CRISPR systems 246  
Cryogenic electron microscopy 33  
*Curcuma longa* 201, 206  
Cyclic amplification assay 131  
Cyclooxygenase 60  
Cytochrome 18, 22, 74  
    mitochondrial 22  
Cytokines 139, 167, 168, 204, 207  
    anti-inflammatory 204  
    release 168  
Cytoplasm 21, 29, 38, 40, 45, 46, 63, 163  
    neuronal 38  
Cytoplasmic inclusion formation 169  
Cytosolic dysfunctions 102
- D**
- Damage 4, 59, 66, 101, 103, 108, 137, 139, 164, 208, 232  
    acid-induced 208  
    neuronal membrane 101  
    oxidative stress-induced 59  
Danger-associated molecular patterns (DAMPs) 166  
Death 23, 62, 65, 75, 89, 101, 103, 105, 204, 207, 261, 262, 263, 264, 265  
    astrocytic 62  
    dopaminergic neuronal 207  
    embryonic 105  
    restrained dopaminergic neuron 204  
Defective mitochondrial respiration 15  
Defects 38, 39, 176  
    rescued microtubular 176  
Deficits 109, 126, 136, 176, 204  
    fast axonal transport 176  
    midbrain.Motor 204  
    neurological 126  
Degeneration 13, 18, 36, 63, 71, 72, 167, 177, 222, 237  
    accelerated brain 63  
    dopaminergic 36, 167  
Degeneration process 94  
Degenerative diseases 127  
Degradation 32, 74, 79, 111, 169, 172, 174, 207, 231, 246  
    amyloid plaque 174  
    preventing tau 231  
Degradation of mHTT Protein 109  
Degradative ubiquitin signalling 17  
Deletions 74, 175  
    genetic 175  
    mitochondrial 74  
Deposition 2, 6, 30, 31, 32, 33, 39, 88, 89, 91, 92, 166, 174, 226, 234, 235, 237  
    amyloid 31, 166, 174, 226, 237  
    plaque 166  
Deposits 6, 32, 35, 162, 228, 229  
    amyloid 6, 35, 162  
    neurotoxic 32  
    reduced 228  
Depression 9, 14, 30, 36, 89, 100, 238, 239, 240, 241, 243  
Detect synaptic loss 132  
Developmental disorders 266  
Diabetes mellitus 220  
Diagnosis 100, 121, 122, 125, 126, 127, 128, 129, 131, 132, 133, 136, 138, 139, 219, 221  
    molecular genetic 132  
Diagnostic 126, 134  
    methods 134  
    systems 126  
Diarrhoea 224, 225  
Dictyostatin 176  
Diffusion tensor imaging (DTI) 108  
Disease(s) 1, 2, 3, 7, 9, 17, 18, 19, 26, 28, 59, 60, 62, 65, 66, 71, 72, 89, 90, 92, 100,

## Subject Index

104, 107, 117, 119, 121, 126, 127, 132, 138, 144, 151, 171, 200, 202, 208, 220, 235, 240, 262, 263, 264, 265  
aggregation-related 26  
amyloid 171  
argyrophilic grain 28  
auto-immune 138  
autosomal dominant Parkinson's 18  
autosomal recessive juvenile Parkinson's 17  
cardiovascular 208, 235  
coronary artery 89  
demyelinating 119  
early-onset autosomal dominant genetic 90  
genetic 127  
heart 240  
motor neuron 59, 60, 62, 65, 66, 265  
neurodegenerative 92, 202  
  progression, neurodegenerative 132, 151  
sporadic Parkinson's 7, 19  
Disorders 28, 36, 60, 66, 67, 71, 72, 76, 7, 127, 129, 133, 136, 138, 143, 144, 236, 240  
  age-dependent 143  
  age-related 36  
  depressive 72  
  genetic neuro 144  
  neurodegenerative progressive 76  
  neurologic 66, 67, 129  
  sleep 77  
DNA 4, 16, 22, 44, 45, 61, 72, 74, 129, 146, 218, 234, 246, 247  
  cleave 246  
  fragmentation 22  
  mitochondrial 16, 74  
  modification 72  
  nuclear 16  
  plasmid 234  
  /RNA binding protein 45  
  vaccination 247  
DNA damage 14, 21, 60, 64, 65, 92, 162  
  and initiation of cellular death pathways 14  
  mitochondrial 64  
Dopamine 13, 22, 65, 71, 72, 73, 75, 77, 78, 134, 167, 199, 201, 204, 244  
  cytosolic 73

## Neurodegenerative Diseases 277

  deficiency 13  
  metabolism 65, 201  
  modulating striatal 244  
  neuron 72  
  neurotransmitter system 77  
Dopaminergic neurons 16, 17, 22, 23, 71, 73, 74, 75, 77, 80, 81, 177, 199, 204, 209  
  degenerating 80  
Down's syndrome 132  
Drug(s) 81, 88, 89, 92, 111, 161, 162, 163, 165, 178, 200, 218, 221, 222, 224, 225, 229, 230, 231, 233, 242, 247  
  anti-epileptic 229  
  anti-inflammatory 165, 218, 233  
  galantamine 89  
  neuroprotective 81, 200  
  putative 218  
  therapeutic 247  
Dynamics 2, 18, 19, 163, 229, 231  
  abnormal protein 2  
  fission 18  
Dysesthesias 118  
Dysfunction 3, 27, 33, 45, 74, 77, 92, 118, 132, 136, 169, 202, 209, 210, 220, 225  
  autonomic 33  
  bladder 118  
  cholinergic 92, 169  
  lysosome 202  
  proteasomal 209, 210  
  urinary sphincter 118  
Dyskinesia 105, 177  
  levodopa-induced 177  
Dystonia 135, 240, 242

## E

Effects 106, 163, 165, 177, 207, 209, 225, 226, 232, 234, 238, 239  
  antiapoptotic 207, 209  
  antidepressant 238  
  autophagy-inducing 165  
  cytoprotective 232  
  immunomodulatory 177  
  neuroplastic 225



- neurotoxic 106
- synergistic 234, 239
- therapeutic 163, 222, 226
- Encephalitis 265
- Endocannabinoid inactivation 177
- Endogenous 167, 223
  - defence augmentation 223
  - diadenosine polyphosphate 167
- Endonuclease 22
- Endoplasmic reticulum stress mediated
  - neurodegenerative signalling 20
- Energy 15, 20, 109
  - biogenesis 15
  - crisis 20
  - metabolism 109
- Enzymatic 17, 60
  - activity 17
  - reactions 60
- Enzyme(s) 14, 21, 30, 73, 109, 150, 204, 220, 227, 230, 237, 238
  - aspartyl protease 30
  - choline acetyltransferase 220
  - linked immunosorbent assay 150
  - monoamine oxidase 14
  - proteolytic 21, 238
- Epilepsy 127, 128, 220, 265
- Equilibrium, dynamic 226
- Erythrocyte adhesion 225
- European liver transplant registry (ELTR) 35
- Excitotoxicity 65, 66, 101, 106, 109, 110, 111, 200, 204, 220, 224
- Eye 33, 137, 268
  - catching statistic 268
- F**
- Factors 2, 3, 5, 7, 9, 10, 27, 38, 41, 103, 118, 125, 127, 139, 143, 151, 163, 168, 173, 175, 177, 202, 207, 218, 234, 240
  - apoptosis-inducing 207
  - brain-derived neurotrophic 41, 103, 175
  - epigenetic mutation 38
  - exogenous/environment 5
  - hormonal 7
  - innate immune 139
  - nerve growth 234
  - neuroprotective 173
  - neurotrophic 218, 234, 240
  - nuclear 118
  - proinflammatory 163, 168, 177
  - protective 9
- Familial 33, 35, 90, 219
  - amyloidotic polyneuropathy world transplant registry (FAPWTR) 35
  - amyloid polyneuropathy (FAP) 33, 35
  - autosomal dominant (FAD) 90, 219
- FAP pathogenesis 33
- Fatal familial insomnia 125, 129
- Ferroptosis 40
- Fibrillar aggregates 45, 46
  - sarkosyl-insoluble 46
- Fibrils 31, 35, 36, 38, 39, 92
  - amyloidogenic 38
- Fibrilsoligomers-monomers 226
- Fragments 34, 35, 39, 41, 43, 91, 104, 136
  - amyloidogenic 34
  - lethal amino-terminal 41
  - toxic 136
- Functional 21, 239
  - coherence 21
  - regression 239
- Functions 19, 20, 27, 28, 30, 32, 33, 37, 100, 101, 103, 105, 109, 110, 118, 133, 168, 170, 234
  - anti-apoptotic 103
  - automatic 133
  - inhibitory 110
  - neurogenesis 103
  - secretase 234
  - suppressive 118
  - synaptic 37, 109
- Fungal infections 128
- Fuorescent antibody 130
- G**
- GABAergic 167, 226
  - and cholinergic neurons 226

- interneurons 167
- Galandamycin 171
- Gas chromatography 152
  - mass spectrometry 152
- Gene expression 45, 144, 146, 175, 228
  - microarrays 146
  - viral vector-delivered 228
- Gene(s) 6, 7, 16, 17, 38, 39, 41, 72, 75, 76, 101, 132, 134, 135, 146, 147, 208, 240
  - duplication 38
  - dysregulated 147
  - mutant 240
  - proinflammatory 208
- Gene therapies 218, 247
  - targeted 247
- Genetic 19, 27, 101, 131, 133
  - and molecular basis of huntingtin disease 101
  - mutations 19, 27, 131, 133
  - polymorphic condition 74
- Genetic disorders 99, 100, 144
  - autosomal dominant 100
- Giant cell arteritis 266
- Glatiramer acetate (GA) 175
- Glaucoma tests 137
- Glial fibrillary acidic protein (GFAP) 79, 207
- Glucose metabolism 153
- Glutamate excitotoxicity 111
- Glutamatergic 224, 225, 226
  - hyperactivity 224
  - neurons 225
  - serotonergic system modulate 226
- Glutathione 62, 65, 76
  - peroxidase activity 65
  - transferase (GSTs) 76
- Glycosaminoglycan 228
- Glymphatic function 173
- GTP-GDP hydrolysis 19
- Guanosine monophosphate 244
- Gut microbiome 236
  - dysbiosis 236

**H**

- Haemorrhagic stroke 266
- Hallucinations 89, 243
- HD 41, 42, 106, 107, 110
  - disease progression 107
  - pathogenesis of 41, 42
  - pathological condition of 106, 110
- Health 2, 143, 128, 162, 205, 261, 262, 263, 264, 267, 270, 271
  - mental 2, 128, 262
  - neurological 267
  - neuronal 162, 271
  - sector, neurological 270
- Health services 267, 271
  - neurological 267
  - neuronal 271
- Heat shock 76, 161, 162, 171, 172, 231
  - protein 76, 161, 162, 171, 231
  - response 172
- HeLa cells 165, 206
- Hepatocyte preparations 15
- Hepatotoxicity 222
- Hereditary 33, 35, 36
  - amyloidosis 33
  - ATTR amyloidosis 35, 36
- Heteronuclear 152
  - multiple bond correlation (HMBC) 152
  - single quantum correlation spectroscopy 152
- High-throughput 143, 148
  - omics-based technologies 143
  - sequencing techniques 148
- Hip fracture 239
- Histone 41, 106, 170
  - acetyl transferases 106
  - deacetylases 41, 170
- Homeostasis 17, 18, 20, 93, 172, 234
  - cholinergic 234
  - metabolic 172
  - mitochondrial 17, 18
  - transition metal 93
- Hormone(s) 233
  - progesterone 233

replacement therapy 233  
 HSP proteins 76  
 HTT-lowering gene therapy 247  
 Human immunodeficiency virus (HIV) 128  
 Huntingtin 7, 28, 39, 40, 41, 99, 100, 101, 103, 106, 136, 165, 219, 240  
   aggregates 165  
   disease 99, 100, 101, 106  
   gene 39, 101, 103  
   protein aggregates 41  
 Huntingtin protein 39, 101, 103, 165, 245  
   mutant 101, 165  
 Huntington 3, 26, 28, 29, 40, 225, 245, 246  
   associated protein 40  
   disease and memantine 225  
   protein 246  
 Hypertension 2, 9, 78, 89, 221, 266  
   idiopathic intracranial 266  
 Hypothalamus 31, 77, 78, 104  
   dorsolateral 78  
   thalamus 77

**I**

Illnesses 2, 4, 5, 6, 7, 38, 46, 95, 126, 138, 239  
   neurodegenerative 4, 38, 126  
 Imaging technique 80, 81  
   non-invasive radioelement-based positron emission 80  
 Immune reactivity 139  
 Immunological 27, 129  
   reaction 129  
   responses 27  
 Immunomodulatory drug 244  
 Immunotherapies 218, 247  
 Impaired 4, 105  
   mitochondrial dynamics 4  
   transcription functions 105  
 Inclusions 41, 42, 169  
   cytoplasmic 41  
   hyaline conglomerate 42  
   lysosomal 42  
   reducing toxic nuclear 169  
 Inducible nitric oxide synthase 203, 205

Induction of neurodegenerative diseases 5  
 Infectious diseases 127  
 Inflammation 2, 7, 95, 118, 162, 165, 168, 171, 172, 178, 234, 237  
   suppress 234  
 Inflammatory 138, 207, 235  
   marker expression 207  
   response 138, 235  
 Influenza virus 75  
 Inherited metabolic disorders 266  
 Inhibiting amyloid aggregation 231  
 Inhibition 16, 89, 109, 110, 176, 201, 203, 205, 206, 207, 208, 209, 210, 233  
   cholinesterase 89  
   cyclooxygenase 233  
   monoamine oxidase 176  
   proteasome 206  
 Inhibitors 42, 88, 110, 163, 169, 204, 208, 209, 218, 223, 227, 229, 231, 235, 237, 244, 245  
   acetylcholinesterase 88, 218  
   bacterial protease 237  
   enzyme 110  
   lysosomal cysteine proteinase 42  
   monoamine oxidase 235  
   plasminogen activator 228  
   secretase 227, 235  
 Injury 117, 177, 203, 231, 232, 265  
   oxidative 177, 203, 232  
   preventing mitochondrial 231  
 Insomnia 205, 220, 225, 241, 243  
 Iron overload disorder thalassemia 174

**J**

Jakob disease 125, 129

**K**

Kinase 14, 17, 22, 42, 76, 134, 163, 167, 170, 207, 229, 230  
   glycogen synthase 230  
   tyrosine 229

**L**

Lactate dehydrogenase release 208  
 Lafora disease 165  
 Lamiaceae drosophila 201  
 Lateral 1, 8, 26, 28, 29, 62, 65, 143, 144, 154, 161, 227  
   sclerosis 1, 8, 26, 28, 29, 62, 65, 143, 144, 154, 161  
   ventricular injection 227  
 Lesions 117, 118, 120, 121, 122, 177  
   demyelinating 120  
   nigrostriatal 177  
 Leucine-rich repeat kinase 19  
 Leukocytes 18  
 Leukotrienes 163  
   inflammatory 163  
 Leukotriene signaling 165  
 Lewy body 133, 219  
   dementia 133  
   disease and Frontotemporal Dementia 219  
 Lipids 4, 5, 20, 62, 63, 66, 73, 79, 151, 153, 154, 203, 234, 235  
   metabolism 20, 153, 154  
   modifying therapy 234  
   oxidizable 203  
   peroxidation 62, 235  
 Lipidomics 153  
 Liposarcoma 44  
 Lipoxygenase 60  
 Liquid chromatography 152, 153  
   mass Spectrometry 153  
 Liquid-liquid phase separation (LLPS) 46  
 Luteinizing hormone 233  
 Lymphocytes 118, 138

**M**

Machado-Joseph disease 165  
 Macroautophagy 162  
 Magnetic resonance 80, 108, 117, 119, 121, 122  
   imaging (MRI) 80, 108, 117, 119, 121, 122  
   relaxometry 108

MAP kinase 61  
 MAPK 110, 209  
   phosphatases 110  
   phosphorylation 209  
 MAPT gene 31  
 Mass spectrometry 149, 150, 152  
   laser desorption/ionization time-of-flight 149  
 Mechanisms 14, 19, 20, 21, 27, 28, 32, 34, 36, 62, 65, 66, 76, 95, 119, 120, 139, 167, 177, 178, 232, 233  
   anti-apoptotic 167  
   based disease taxonomies 139  
   detoxification 76  
   homeostatic 95  
   necrosis 62  
   neurodegenerative 178  
   oxidative 66  
   pathogenetic 120, 177  
   proteolysis 34  
 Medicinal 176, 199, 200, 201, 202, 203, 204, 205, 210, 235  
   herbs 200, 210  
   plants 176, 199, 200, 201, 202, 203, 204, 205, 210, 235  
 Medicines 2, 200, 235  
   herbal 235  
 Melatonin 228, 232, 239, 243  
   hormone 228  
 Membrane 15, 29, 41, 220  
   mitochondrial inner 15, 29, 41  
   post-synaptic 220  
 Memory 63, 95, 101, 107, 219, 220, 221, 225, 226, 228, 232, 234  
   inhibited 63  
 Memory loss 65, 88, 90, 91, 95, 96  
 Meningeal lymphatic vessels 173  
 Meningitis 265, 266  
 Metabolic 79, 151, 154  
   biomarkers 79  
   profiling 151, 154  
 Metabolism 4, 59, 61, 73, 75, 109, 147, 153, 164, 226  
   arachidonic acid 153  
   cytochrome P450 59

- dopaminergic 147
- sphingolipid 153
- Metabolites 71, 80, 151, 152, 153, 154, 204
  - energy 154
- Metabolomics 143, 145, 151, 152, 153, 154, 155
  - based biomarker discovery 153
- Metal(s) 9, 10, 92, 173, 244
  - chaperone 244
  - chelators 173
  - dyshomeostasis 92
  - toxic 9, 10
- Metalloproteinase 228
- Microglia 63, 118, 139, 163, 167, 177, 203, 207, 230, 240
  - activation 167, 177
  - resident glial cell 163
- Microgliosis 202
- Micro RNAs 80
- Microsomal epoxide hydrolase 76
- Microtubule(s) 31, 32, 120, 163, 223, 230, 231
  - associated protein tau (MAPT) 29, 31, 131
  - depolymerizes 120
- Migraine 127, 265, 266
- Misfolding and non-functional protein trafficking 3
- Mitochondria 4, 16, 18, 20, 21, 164
  - associated membrane (MAM) 20, 21
  - dysfunctional 18, 164
  - ER signalling 20, 21
  - healthy 16
  - malfunctioning 4
- Mitochondrial 1, 2, 3, 4, 13, 14, 15, 16, 17, 18, 19, 20, 22, 42, 63, 64, 65, 74, 95, 104, 106, 120, 161, 162, 171, 200, 202, 204, 205, 223, 232, 240, 244
  - bioenergetics 171
  - biogenesis 4
  - DNA mutations 16
  - dysfunction 1, 3, 4, 13, 14, 15, 19, 42, 63, 64, 65, 161, 162, 200, 202
  - enzyme monoamine oxidases 204
  - fission 4, 18, 20
  - functions 17, 19, 63, 74, 95, 104, 106, 120, 232, 240, 244
  - malfunction 2
  - outer membrane permeabilization (MOMP) 22
  - permeability transition (MPT) 42
  - targeted therapy 223
  - transmembrane 205
- Mitogen-activated protein (MAP) 22, 110, 150, 163, 168, 237
  - kinase (MAPK) 110, 163, 168, 237
- Modifications 1, 30, 32, 41, 73, 110
  - dysregulated protein 32
- Modulating NMDA receptor activity 224
- Modulation 110, 223, 226
  - secretase enzymes 223
- Molecular 27, 101, 129
  - basis of Huntingtin disease 101
  - chaperones machinery 27
  - diagnostics methods 129
- Monoclonal antibodies 230, 231, 237
- Monotherapy 226, 239
- Mood 103, 204
  - disorders 204
  - dysfunctions 103
- Motor ) 14, 59, 60, 62, 65, 66, 99, 169, 265
  - disorders 99
  - dysfunction 99, 169
  - neuron disease (MND) 59, 60, 62, 65, 66, 265
  - neurons 65, 66, 76
  - symptoms, classical parkinsonian 14
- Movement disorder 39, 135
  - abnormal involuntary 39
- MPTP-induced 170, 208
  - loss of dopaminergic neurons 170
  - microglia 208
  - parkinsonism 170
- MRI 108, 118, 122
  - technique 108, 118
  - technology 122
- mRNA degradation 110
- MS-based targeted quantitative proteomics 150
- MS techniques and bioinformatics 148

- Multiple 28, 167, 169  
  myeloma 169  
  system atrophy (MSA) 28, 167  
Multi-spectral ultraviolet fluorescence  
  spectroscopy 130  
Muscular dystrophy 164  
*Mycobacterial tuberculosis* 128  
Myelination, restoring 164  
Myelin sheath breakdown 108  
Myeloperoxidase 207
- N**
- National organization for rare disease  
  (NORD) 39  
Natural polypeptides 238  
Nausea 224  
*Neisseria meningitidis* 128  
Nepriylisin activation 228  
Nerve(s) 18, 33, 119, 127, 135, 173, 234  
  growth factor (NGF) 234  
  spinal 173  
Nervous system 62, 65, 101, 127, 133, 138,  
  162, 165, 264  
  disorders 138  
  pathology 165  
  sympathetic 133  
Neuroinflammation 200  
Neural 32, 163  
  plasticity 32  
  synaptic rehabilitation 163  
Neurodegeneration 100, 115, 208  
  dopaminergic 208  
  HD condition 100  
  immune-mediated 115  
Neurodegenerative 131, 163, 176  
  dementias 131  
  phenotypes 176  
  progression 163  
Neurodegenerative Diseases 8, 33, 60  
  fatal autosomal-dominant 33  
  multifactorial 8  
  pathogenesis of 60  
Neurodegenerative disorders 71, 81, 88, 99,  
  100, 106, 240  
  progressive 71, 81, 88, 99, 100, 240  
  progressive chronic 106  
Neurofibrillary tangles 6, 29, 30, 31, 88, 89,  
  90, 95, 164, 165, 170, 231  
  dephosphorylates 165  
Neuroimaging 80, 107, 108, 144, 221  
  biomarkers 80, 107  
Neuroinflammation 73, 74, 138, 139, 161,  
  163, 199, 202, 204, 208, 210, 232, 236,  
  237  
  streptozotocin-induced 232  
Neuroinflammatory 164  
Neurological 36, 128, 132, 133, 153, 154, 155,  
  162, 264, 265, 266  
  diseases 128, 133, 153, 154, 155, 264, 265  
  infection 266  
  pathogenesis 132  
  symptoms 36, 162  
Neurological disorders 125, 127, 128, 143,  
  144, 145, 146, 150, 151, 261, 262, 264,  
  265, 266, 267  
  global burden of 264, 267  
Neuromelanin pigment 73  
  decaying neurons release 73  
Neuronal 22, 36, 63, 65, 89, 90, 95, 109, 115,  
  162, 177, 207, 208, 209, 210, 230  
  degeneration 162, 177, 230  
  inflammation 115  
  lesions 63  
  loss 22, 65, 89, 90, 95, 109, 207, 208, 209,  
  210  
  nitric oxide synthase, inhibiting 177  
  plasticity 36  
Neurons 15, 18, 32, 40, 62, 71, 72, 73, 74, 75,  
  78, 79, 89, 101, 106, 115, 118, 125, 126,  
  127, 130, 136, 171  
  damaged 126  
  fetal murine 166  
  specific enolase (NSE) 130  
  tau-injured 171  
Neuropathy 33, 95  
  peripheral sensory-motor 33  
Neuropeptide hormone 78

Neuroprotective function 75, 110  
 Neurotic dystrophy 31  
 Neurotoxicity 34, 106, 172, 177, 202  
   endoneurial 34  
 Neurotoxin 16  
 Neurotransmitters 18, 77, 153, 154, 199, 204,  
   220, 222, 225  
   hypothalamic 77  
   key inhibitory 225  
   oxidative deamination of amine 204  
   release 18  
 Next-generation sequencing 127  
 Nitric oxide synthases 163  
 NMR techniques 152  
 Non communicable diseases (NCD) 262  
 Non-steroidal anti-inflammatory drug  
   (NSAIDs) 36, 166, 233, 235  
 Nonsynaptic brain mitochondria 15  
 Nuclear magnetic resonance (NMR) 152  
   spectroscopy 152  
 Nucleotides 146

## O

*Ocimum sanctum* 201  
 Oligodendrocytes 118, 164  
 Oligomannate 236  
 Oligomers 92, 162, 238  
   toxic 92  
 Oligomers 32, 33, 37, 90, 131  
   disordered 32  
 Oligonucleotide, antisense 245  
 Omics 143, 145, 154, 155  
   based technologies 154  
 Oogenesis 103  
 Optic neuritis 118  
 Orthotopic liver transplantation (OLT) 35  
 Osteoporosis 208  
 Overexpression 19, 73, 76, 103, 105, 167, 171  
   transgene 171  
 Oxidase 73, 74, 75, 238  
   monoamine 73, 75, 238  
 Oxidation 43, 62  
 Oxidative 15, 202

  phosphorylation 15  
   pressure harms cell proteins 202  
 Oxidative damage 40, 60, 62, 67, 76, 92, 203,  
   235, 236  
   by polyphenols in pd 203  
   neuronal 235  
 Oxidative metabolism 64, 232  
   mitochondrial 232  
 Oxidative stress 2, 5, 59, 60, 62, 63, 65, 75,  
   92, 162, 168, 172, 202, 203, 208, 209,  
   236  
   reduced inflammation-led 168  
   reduced intracellular 236  
 Oxygen 5, 15, 59, 60, 62, 73, 92  
   producing 59

## P

Paired helical filaments (PHFs) 32, 230  
 Parallel reaction monitoring (PRM) 153  
 Parasitic infections 128  
 Parkin, genes encoding 14  
 Parkinson 26, 28, 29, 34, 62, 65, 133, 135,  
   138, 139, 147  
 Parkinsonism 18, 133, 221, 240, 241, 242  
   autosomal-recessive juvenile 18  
 Parkinson juvenile disease protein 17  
 Parkinson's 9, 13, 17, 36, 37, 65, 72, 73, 74,  
   75, 76, 77, 78, 79, 81, 134, 147, 177,  
   199, 200, 204  
   brain 37  
   disease (PD) 9, 13, 17, 36, 65, 72, 73, 74,  
   75, 76, 77, 78, 79, 81, 134, 147, 177,  
   199, 200, 204  
   syndrome 134  
 Pathogenic 3, 44, 46, 137  
   cascades 3  
 Pathology 13, 16, 63, 89, 93, 94, 132, 164,  
   172, 176, 218, 219, 220, 225  
   neurodegenerative 164  
   tau-induced 176  
 Pathophysiology 91, 106  
   of Alzheimer's disease 91  
   of Huntingtin disease 106

**Subject Index**

Pathways 14, 15, 21, 59, 90, 110, 147, 153, 162, 168, 173, 231, 236  
cellular death 14  
fatty acid biosynthesis 153  
glycolytic 15  
glymphatic 173  
intracellular 231  
intrinsic 21  
metabolic 147  
mitochondria-mediated 21  
regulating protein-degradation 162  
xenobiotic 59  
Phagocytosis 168  
Phosphodiesterase 170, 232, 244  
inhibitors 170, 232  
Plasma 76, 78, 148, 149, 150, 224, 230  
glutathione transferases 76  
Platelet-derived growth factors (PDGF) 61  
Pneumonia 101, 240, 244  
aspiration 244  
Polyglutamine 7, 104, 106  
fragments 104  
Polygonum multiflorum 177  
Polymorphisms 2, 6, 7, 72, 73, 76  
genetic 2, 72, 73, 76  
Polyneuropathy 26, 28, 29, 34, 35  
amyloid 26, 28  
Polyneuropathy progression 36  
Positron emission tomography (PET) 80, 81, 89, 93, 108, 221, 236  
Post 3, 22, 27, 105, 106, 149, 150  
mortem brain 22  
translational modifications 3, 27, 105, 106, 149, 150  
Premature truncation 148  
Presenilin gene mutations 222  
Pressure 137, 173, 203  
oxidative 203  
hydrocephalus, normal 173  
Primary 116, 117, 137  
congenital glaucoma (PCG) 137  
progressive multiple sclerosis (PPMS) 116, 117  
Prion proteins 28, 44, 164

**Neurodegenerative Diseases 285**

Processes 4, 13, 20, 21, 27, 46, 60, 77, 79, 92, 119, 144, 162, 163, 165, 175, 226, 233  
ageing 4  
autophagic 165  
fusion 20  
inflammatory 163, 167, 233  
lipid peroxidation 92  
macroautophagy 162  
neurodegenerative 77, 79  
Production 4, 5, 15, 42, 45, 92, 103, 166, 168, 203, 207, 245, 246  
deregulated condensate 45  
energy 15, 42  
reduced inflammatory cytokine 166  
Prognosis 6, 115, 119, 127, 218  
Progressive neurodegeneration 74  
Pro-inflammatory cytokines expressions 209  
Properties 32, 43, 89, 170, 176, 177, 201, 206, 207, 210, 230, 234, 235, 246  
aggregated protein's 43  
anti-apoptotic 177  
antibacterial 235  
anti-inflammatory 201, 207  
anti-inflammation 206  
anti-Parkinsonian 210  
neuroprotective behavior 89  
neurotoxic 32  
Protease cleavages 39  
Proteasomal degradation 105, 169  
Proteasome 32, 45, 74, 79  
suppression 32  
Protection, immune 26  
Protein(s) 3, 17, 20, 21, 22, 26, 27, 28, 32, 42, 43, 44, 45, 63, 71, 78, 79, 90, 99, 100, 101, 106, 109, 110, 130, 132, 147, 148, 149, 150, 154, 164, 171, 209, 219, 227, 230  
acetylate histone 109  
aggregates 26, 27, 28, 71, 164  
amino acid 18  
anti-apoptotic 21  
biosynthesis 3  
degradation 147  
disease-associated 28  
dynammin-related 42



expression 148, 209  
 folding chaperones 21  
 granule-associated RNA binding 46  
 homeostasis 3  
 homoeostasis 32  
 kinases 110, 227  
 lipid transport 219  
 metabolism 147, 154  
 microtubule-associated 90  
 mitochondrial fusion 20  
 mitogen-activated 22  
 nuclear RNA binding 44  
 phosphatase 230  
 phosphodiesterase 110  
 protein interaction networks (PPIN) 147  
 toxic 171  
 trans-membrane 132  
 Protein misfolding 3, 26, 27, 28, 41, 45, 46,  
 76, 131, 161  
 and aggregation 41, 76, 161  
 disorders 28  
 Protein tau 31, 131, 139  
 microtubule-associated 31, 131  
 Proteostasis 32, 161, 163  
 Protofibrils 33, 38, 92, 138  
 Proton motive force 15  
 Psychotic symptoms 238, 242, 243  
 Pyruvate dehydrogenase 64

**R**

Rapamycin 110, 162, 163, 164, 165  
 mammalian target of 162, 163  
 Ras 46, 76  
 GTPase-activating protein-binding protein  
 46  
 in complex proteins 76  
 Reactive 92, 164  
 microgliosis 164  
 nitrogen species (RNS) 92  
 Real time quaking induced conversion assay  
 33  
 Receptor proteins expression 167  
 Reducing energy metabolism 64

Reduction 4, 6, 15, 16, 75, 76, 105, 109, 228,  
 233, 242, 245  
 Re-engineering TNF Inhibitors 237  
 Regulation, synapse activity 30  
 Regulators, membrane trafficking 44  
 Relapsing-remitting multiple sclerosis  
 (RRMS) 116, 117, 175, 244  
 Resonance imaging 80, 108, 119  
 magnetic 80, 108, 119  
 Reverse-phase liquid chromatography (RPLC)  
 153  
 Ribosomal protein S6 kinase signalling 206  
 Ribosome biogenesis 163  
 RNA 44, 66, 129, 111, 151, 206, 218, 245,  
 246  
 antisense 111  
 antisense oligonucleotides 111  
 expression 206  
 interference 246  
 processing defects 66  
 toxicity 44  
 ROS 4, 15, 60, 61, 62, 104, 177, 207, 247  
 modulation 247  
 mutations 61  
 production 4, 15, 60, 62, 104, 207  
 scavenging 177  
 ROS damage 5, 60  
 proteins by oxidising 5

**S**

Sclerosis 66, 164  
 tuberous 164  
 Screening 93, 139, 144, 145  
 symptom-based 144  
*Scutellaria baicalensis* 201, 205  
 Secondary 116, 117, 176, 202, 204  
 metabolite 176, 202, 204  
 progressive multiple sclerosis (SPMS) 116,  
 117  
 Selective serotonin reuptake inhibitors (SSRI)  
 226, 239, 243  
 Separation 46, 148, 149, 152, 153  
 chromatographic 152, 153

- liquid-liquid phase 46
  - Sequence, signature transcriptomic 147
  - Serine threonine kinases activity 76
  - Serotonin Inhibitors (SNRI) 239, 243
  - Side effects 174, 224
    - cholinergic 224
    - gastrointestinal 224
    - hematological 174
  - Signaling pathways 14, 61, 65, 161, 162, 163, 169, 178
    - activating downstream 61
    - downstream 162
    - neurodegenerative 14
    - neuroinflammatory 161
    - targeting cell 178
  - Signaling proteins 61
  - Signalling pathways 13, 21, 23, 110, 120, 147, 154
    - neurodegenerative 13
  - Signal(s) 29, 147, 139
    - immune 139
    - transduction 29, 147
  - Single 33, 81, 148
    - copy gene 33
    - nucleotide polymorphisms (SNPs) 148
    - photon emission computed tomography (SPECT) 81
  - Skin irritation 224
  - Sleep problems 132, 235
  - Smoking tobacco 72
  - Spectroscopy 33, 108, 152
    - magnetic resonance 108
  - Spermatogenesis 102
  - Sphingolipids 153
  - Stearoyl-CoA desaturase 153
  - Stimulus intensity 60
  - Stress 20, 21, 23, 45, 60, 61, 63, 65, 72, 161, 162, 172, 206, 232, 242
    - endoplasmic reticulum 161, 172
    - genotoxic 172
      - induced protein 45
      - oxygen-induced 63
  - Stroke 2, 127, 220, 221, 262, 265, 270
  - Substantia nigra* (SN) 13, 71, 72, 73, 74, 75, 76, 77, 78, 80, 81, 104, 174, 177, 199
  - Superoxide dismutase 60, 63, 172
  - Symptoms 92, 239
    - neuropsychiatric 92
    - suicidal 239
  - Synapses 15, 36, 40, 236
  - Synaptic loss 63
  - Synaptogenesis 30
  - Synaptotoxicity 164
  - Synucleinopathies 134
  - System 36, 45, 61, 71, 109, 126, 173, 201, 225
    - dopaminergic 71, 109, 201
    - glymphatic 173
    - immune 61, 126
    - neurological 36
    - neurotransmission 225
    - ubiquitin-proteasome 45
- ## T
- Targeting 110, 233
    - cellular calcium homeostasis 233
    - kynurenine monooxygenase 110
  - Target 150, 210, 218
    - cholinomimetic 218
    - neuroinflammation 201
    - peptide 150
  - TATA-binding protein (TBP) 41
  - Tau 28, 30, 31, 91, 94, 150, 162, 164, 165, 168, 219, 223, 230, 231, 235, 236
    - aggregation 235
    - hyperphosphorylated 31
    - hyperphosphorylation 91, 168
    - immunotherapy 231
    - metabolism 94, 228
    - pathology 231
    - phosphorylated 94
    - positron emission tomography 236
  - Tau aggregates 230, 231
    - phosphorylated 230
  - Tau phosphorylation 176, 223, 230, 231, 232, 233, 237
    - targeting 230
  - Tau protein 6, 31, 32, 63, 88, 89, 92, 94, 95, 150, 230, 231, 247

- hyperphosphorylated 89, 92
- hyperphosphorylated 88
- phosphorylated 230
- Techniques 80, 81, 107, 108, 123, 128, 130, 131, 149, 151, 152, 153
- brain imaging 80
- chromatography 152
- multi-dimensional protein identification 149
- Tension-type headache Encephalitis Parkinson 265
- Testosterone 233, 234
- Thalamus 29, 31, 32, 77, 78, 104
- Thatchrysin 204
- Therapeutic(s) 10, 80, 81, 108, 110, 111, 122, 155, 163, 173, 223, 224
  - biomarkers 80, 81, 108, 111
  - management in alzheimer's disease 223
  - of Alzheimer's disease 223, 224
  - targets 10, 110, 122, 155, 163, 173
- Therapeutic agents 218, 226, 235
  - amyloid dependent 226
- Therapies 92, 218, 222, 223, 233, 244, 247
  - anti-inflammatory 223, 233, 247
  - genetic 218
  - metal chelation 247
  - miRNA gene 247
  - neurotransmitter-based 222
  - symptomatic 92, 244
- TNF-alpha activity and re-engineering TNF Inhibitors 237
- Toll-like receptors (TLRs) 161, 162, 166
- Total functional capacity (TFC) 136
- Toxic 18, 169, 172, 266
  - biology 169
  - chemicals 266
  - protein aggregates 18, 172
- Toxicity 32, 78, 95, 106, 172, 204, 206, 231, 234
  - cellular 78
  - hydrogen peroxide copper 204
  - rotenone 172
- Toxoplasma gondii* 75
- Tramiprosate 228
- Transactive response DNA binding 42
- Transcription Activator-Like Effectors 246
- Transcriptional 32, 40, 41, 105, 110
  - dysfunction 41
  - dysregulation 32
  - process 40
  - regulation 105, 110
- Transcription factors 16, 18, 41, 105, 163, 178
  - mitochondrial 16, 18
- Transcriptomics 143
- Transduction machinery 163
- Transition 42, 118, 121
  - mitochondrial permeability 42
- Translation 75, 163, 175, 246
  - repressing 175
- Translocase 41
- Translocation 27, 40, 205, 207, 209
  - nuclear 40, 205, 209
- Transmissible spongiform encephalopathies (TSEs) 125, 129, 130, 131
- Transmission 18, 26, 40, 73, 103, 222, 224
  - cholinergic 222
  - hypodopaminergic 244
  - synaptic 18, 103
- Transplantation 35
  - orthotopic liver 35
- Transport 15, 32, 40, 41, 42, 44, 75, 79, 103, 229
  - cholesterol 79
  - impairing BDNF retrograde 41
  - nuclear 44
- Transthyretin 28, 33, 34, 35
  - amyloid 34
  - amyloidosis 34, 35
  - mutant 33
- Traumatic brain injuries 9, 162, 176, 265
- Treatment 66, 94, 95, 126, 162, 164, 175, 199, 200, 204, 222, 229, 230, 234, 235, 236, 237, 238, 239
  - of mood disorders 204
  - progesterone 234
  - therapeutic 66
  - related benefits 230
- Tricyclic Antidepressants 221
- TRIF-dependent pathway 167
- Trinucleotide expansion 240
- Tryptophan catabolism 110

**Subject Index**

**Neurodegenerative Diseases 289**

Tumor suppressor genes 61  
Two-dimensional gel electrophoresis 149  
Tyrosine 22, 44, 61, 76  
    hydroxylase 22  
    kinase activity 61

Zinc finger 110, 246  
    nucleases 246  
    proteins 110, 246

**U**

Ubiquilins, mammalian 45  
Ubiquitin ligase 18, 169  
    activity 18  
Ubiquitin-proteasome system (UPS) 3, 45  
Unfolded protein response (UPR) 21  
Upregulating alpha-secretase activity 227

**V**

Vaccines, hybrid 229  
Vacuolar protein 17  
Vesicles 78, 151  
Vesicular 17, 78, 81, 106  
    acetylcholine transporter 81  
    monoamine transporter 78  
    transport 17, 106  
Vomiting 224

**W**

Whole exome sequencing (WES) 135  
World 88, 267  
    Alzheimer's disease 88  
    federation of neurology (WFN) 267

**X**

Xanthine oxidases 60

**Z**

Zinc 174  
    dyshomeostasis 174  
    transporters 174